

NORTHSHORE STRAITSVIEW

Seafront Living

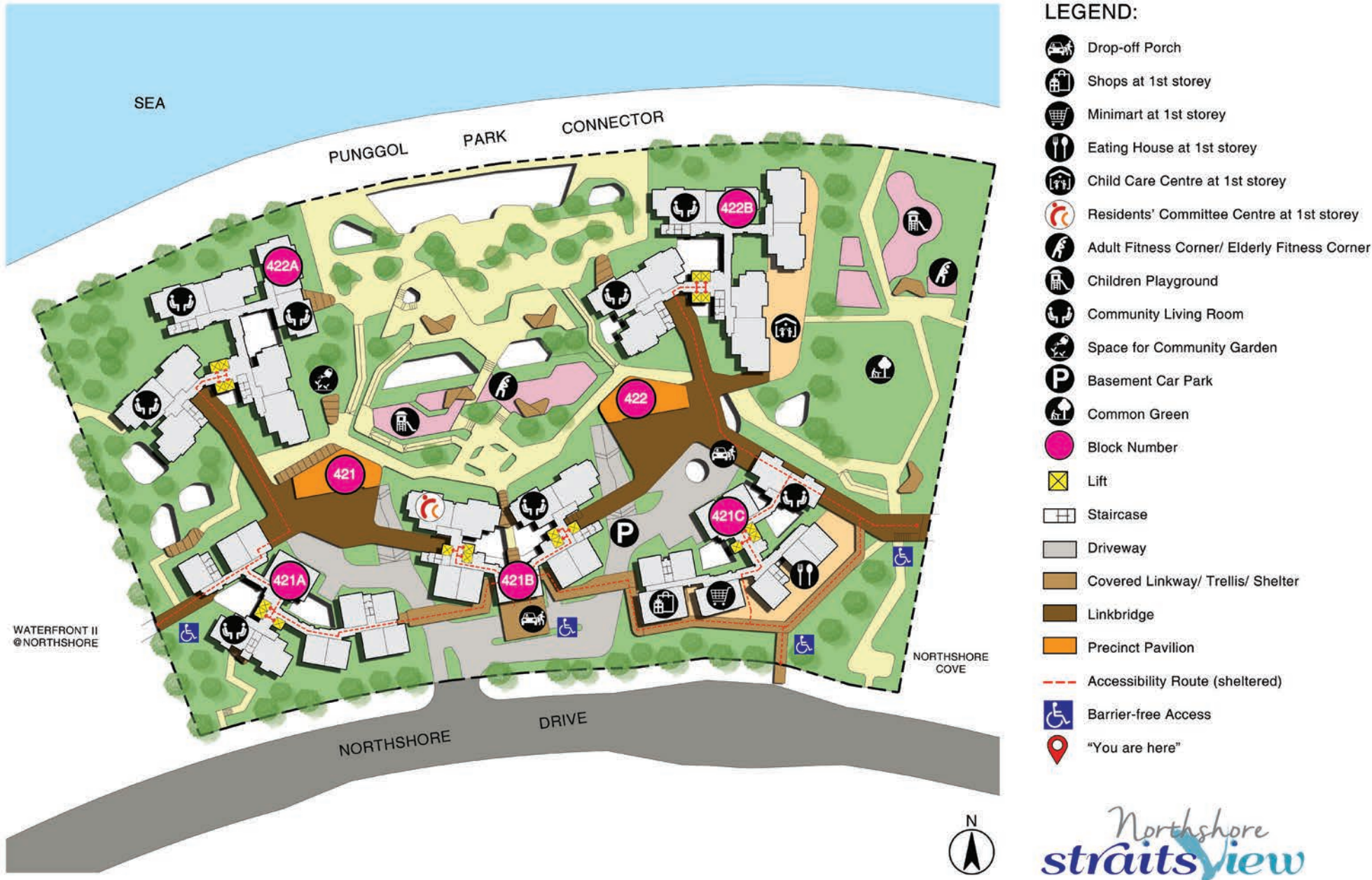
Lining the picturesque Punggol Northshore seafront and along Northshore Drive is Northshore StraitsView. The residential blocks in this development are laid out as an urban sanctuary with a waterfront park connector running parallel to the entire length of the development. This connector links residents to pockets of green spaces that offer an abundance of recreational facilities and amenities for all.

沿着榜鹅北岸区滨海的 Northshore StraitsView 位于北岸通道。贯穿该项目的滨水公园连道毗邻许多绿色空间，所以把此处形容为繁华都市的谧静绿洲也不为过。Northshore StraitsView 的娱乐与休闲设施琳琅满目、应有尽有，因此绝对是居住与生活的绝佳选择。

Northshore StraitsView terletak di deretan pesisiran Punggol Northshore dan di sepanjang Northshore Drive dengan pemandangannya yang indah. Susunan blok-blok kediaman dalam pembangunan ini dibina seperti sebuah tempat istirahat dalam bandar dengan pesisiran taman laluan air bersebelahan, selari dengan keseluruhan pembangunan. Penghubung ini menghubungkan para penduduk ke ruang-ruang hijau kecil yang menawarkan pelbagai kemudahan dan prasarana rekreasi untuk semua.

இயற்கை அழகு சூழ்ந்த பொங்கோல் நார்த்ஷோர் கடல்முகப்பை ஒட்டியும், நார்த்ஷோர் டிரைவ் நெடுகிலும் Northshore StraitsView அமைந்துள்ளது. இந்த மேம்பாட்டில் உள்ள குடியிருப்புத் தொகுதிகள், மேம்பாட்டின் முழு நீளத்திற்கும் இணையாக நீண்டிருக்கும் நீர்முனை பூங்கா இணைப்புடன் ஒரு நகர்ப்புற சரணாலயமாக அமைக்கப்பட்டுள்ளன. இந்த இணைப்பு அனைவருக்கும் ஏராளமான பொழுதுபோக்கு வசதிகளையும், பொதுமக்களுக்கான வசதிகளையும் வழங்குகின்ற பசுமை இடங்களை இணைக்கிறது.

Site plan for Northshore StraitsView



Pleasant Surroundings



LEGEND:
 MRT Line & Station LRT Line & Station Under Construction/Future Road (u/c) Under Construction Scale 0 200 400 Metres
 Common Green MRT Line & Station (Under Construction) Future MRT Station MK MOE Kindergarten

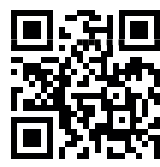
Northshore StraitsView is located in the vicinity of Samudera and Punggol Point LRT stations, which connects residents to Punggol MRT/LRT Station.

The development also features a central green allowing for recreational activities within the precinct. Outdoor facilities include the children’s playground, adult and elderly fitness stations that residents can easily access to adopt a healthy lifestyle. There are also roof gardens, sky terraces, resting shelters and gathering spaces where residents can catch up with neighbours and friends.

With a minimart, an eating house, shops and a childcare centre located within the development, residents will find daily conveniences within easy reach.

Find out more about your neighbourhood <http://www.hdb.gov.sg/map>.

Scan the QR Code below:



Nice Homes

Northshore StraitsView comprises 2-room Flexi, 3-, 4- and 5-room flats.

The 2-room Flexi flats come in two sizes, 36 sqm and 45 sqm with options of a 99-year lease or short-lease. These flats have three-quarter height windows in the living room and bedroom. Floor finishes and wall tiles will be provided for the kitchen and bathroom. Floor finishes will also be provided for the household shelter. These flats will also come with a laminated UPVC sliding partition/door for the bedroom and a laminated UPVC folding bathroom door. As the 2-room Flexi flats on short leases are meant for the elderly, they will be fitted upfront with grab bars.

All 3-, 4- and 5-room flats will come with floor finishes in the kitchen, household shelter, service yard and bathrooms. Wall tiles will also be provided in the bathroom and kitchen. They will have full-height windows for the living room and standard height windows for all bedrooms. The master bedroom of some units are fitted with corner windows and some 4-room and 5-room flats come with a balcony.

All new HDB flats have Universal Design features such as wider corridors and ramps instead of steps to allow for ageing in place.

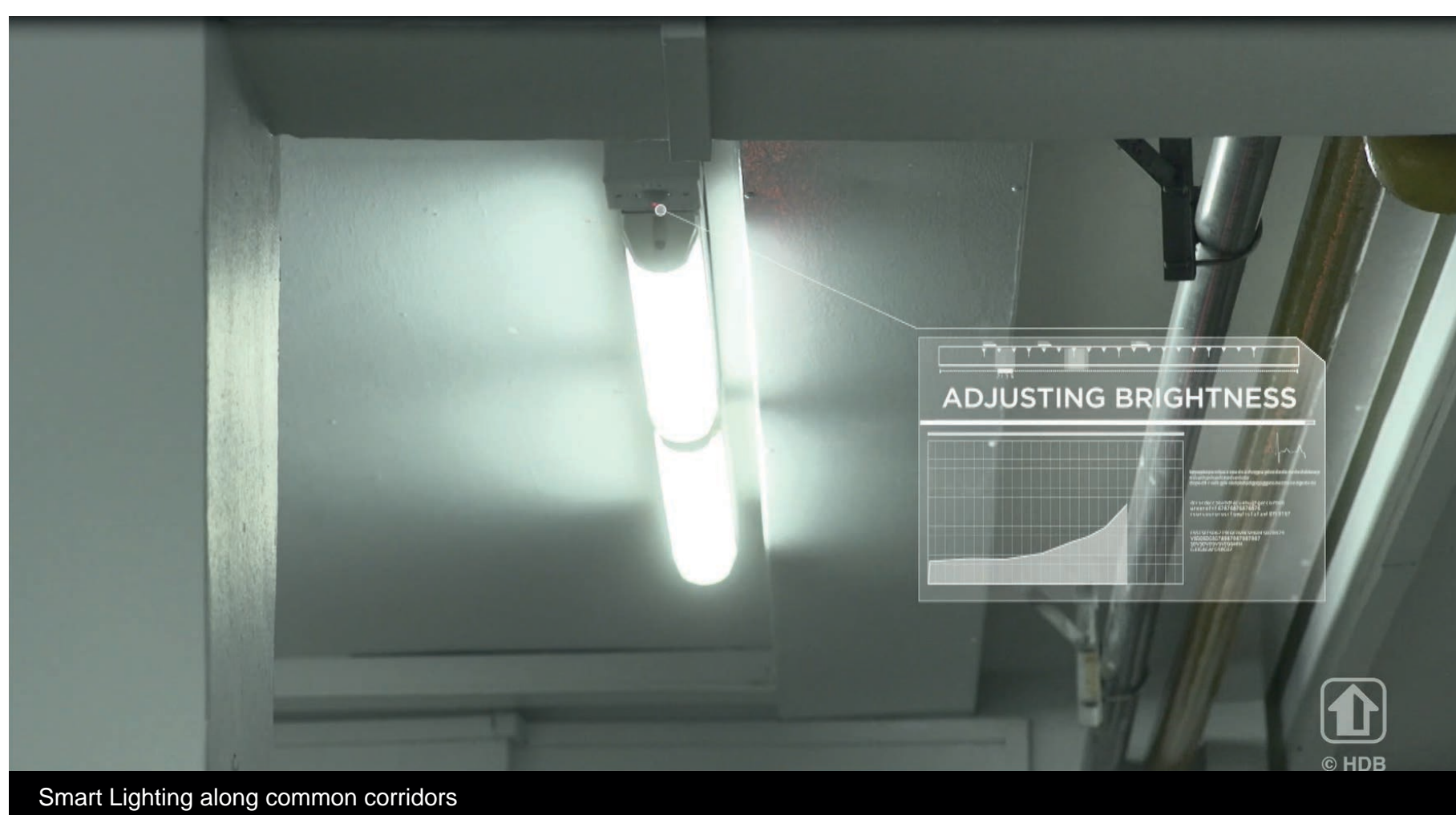


Smart and Eco-Friendly Living

To encourage residents to adopt a smart and eco-friendly lifestyle, Northshore StraitsView is designed with several eco-friendly features. These include separate chutes for recyclable waste and eco-pedestals in bathrooms to encourage water conservation. Bicycle stands to encourage cycling as an environmentally friendly form of transport and Smart Lighting to provide on-demand lighting will meet the needs of residents while reducing energy consumption.



Separate chutes for recyclable waste



Smart Lighting along common corridors



Bicycle Stands

© 2020 Housing & Development Board.
All rights reserved.

