

YISHUN BOARDWALK

Welcome to Your
New Home



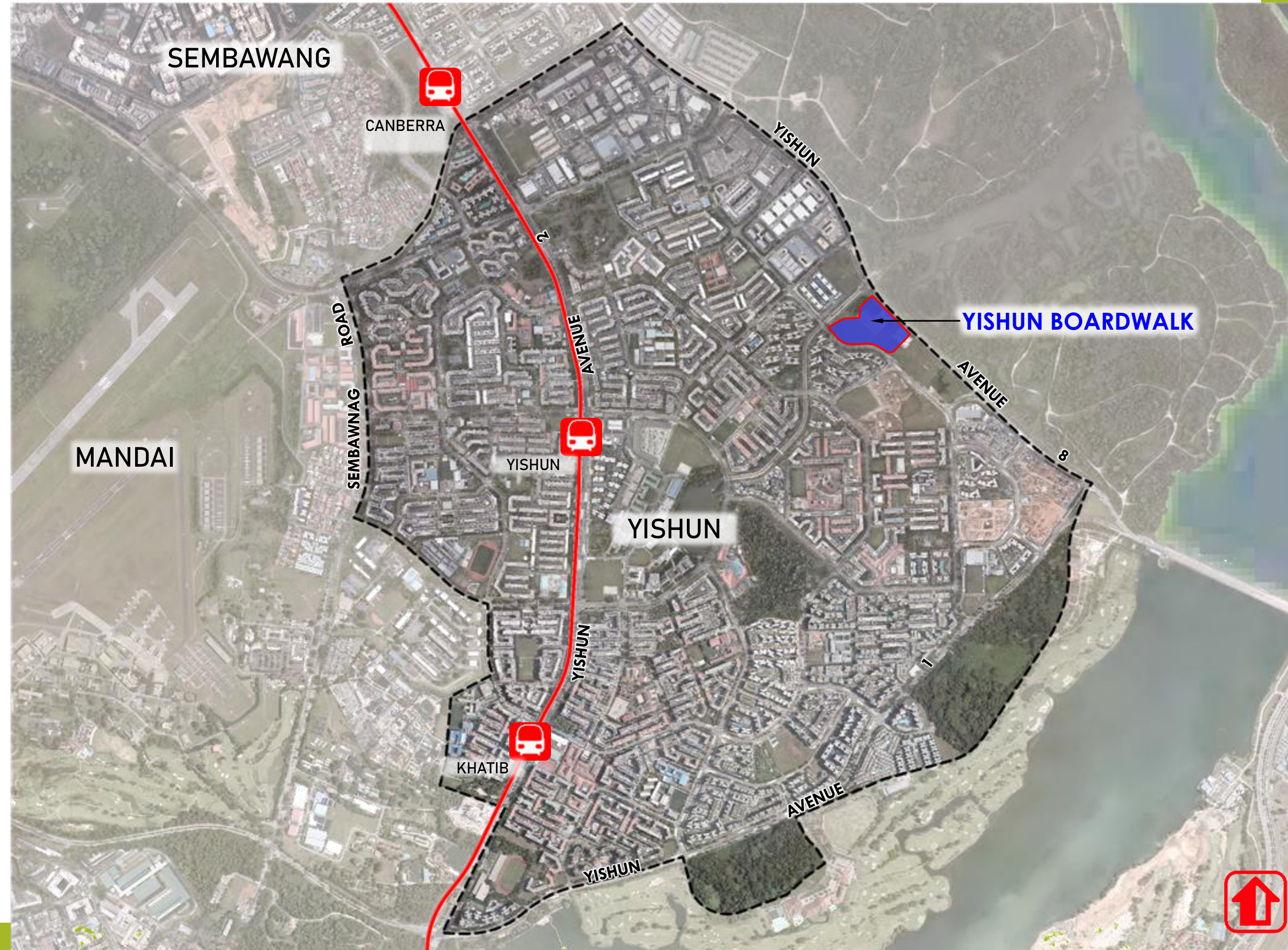
View from Yishun Avenue 6



YISHUN TOWN

Overview

- Vibrant town that offers a wide range of commercial, community and recreational amenities for its residents
- Residents can also enjoy proximity to parks and waterbodies in and around the town



Legend

- Town Boundary
- North-South Line

Amenities around Yishun Boardwalk

- [illegible]

YISHUN TOWN

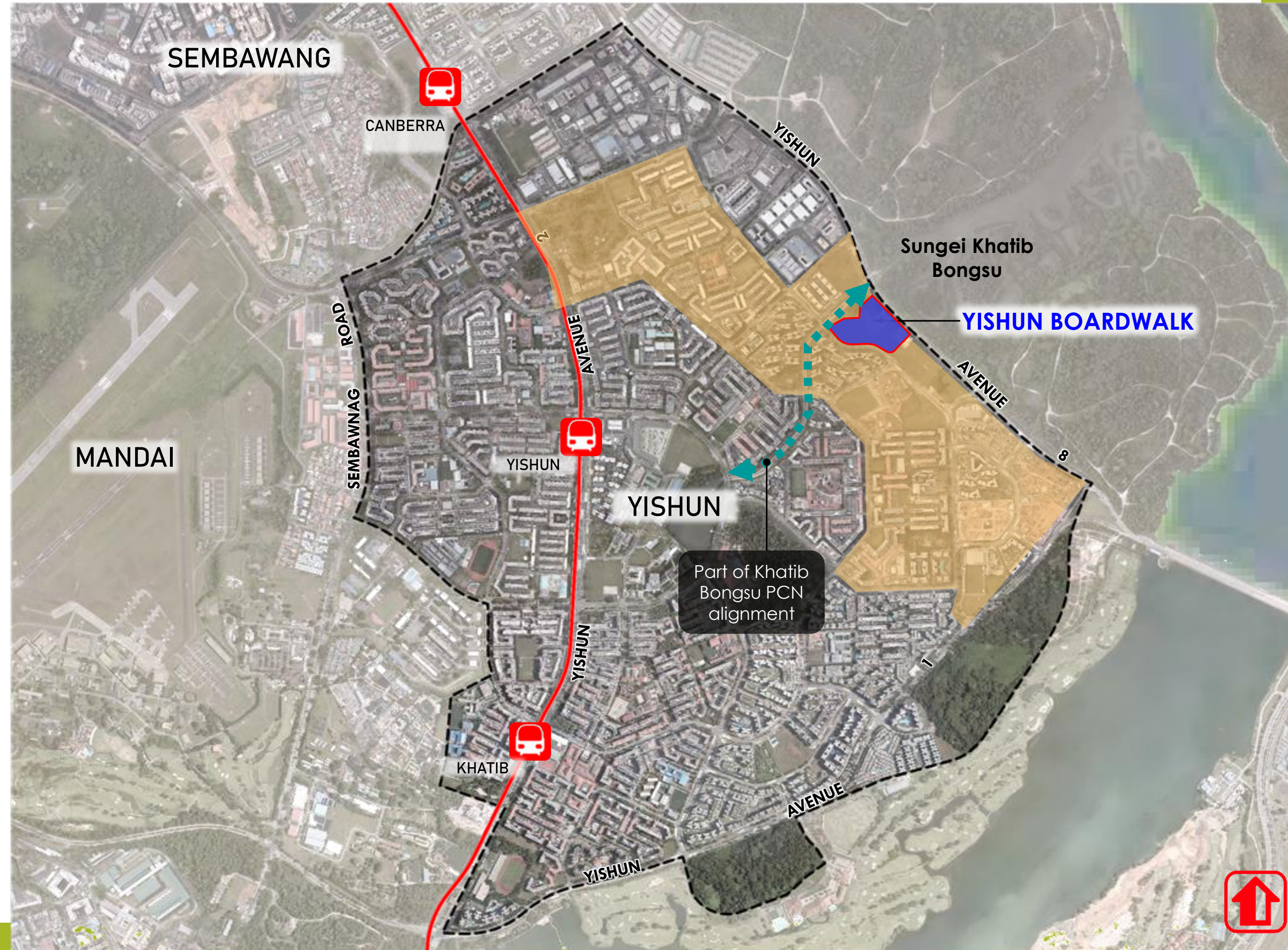
Design Themes

Town Theme: A Vibrant Town with Idyllic Outdoors

- Inspired by the **diversity of spaces** found in Yishun, ranging from active spaces to the more natural, recreation and wellness aspects of the town

Sub-Theme: Estuarine

- Inspired by nearby Sungei Khatib Bongsu, which is one of the last accessible riverine mangroves, design of the developments respond to the surroundings which have a **naturalistic and rustic character**



Legend

- Town Boundary
- North-South Line

YISHUN BOARDWALK

Green Living

Yishun Boardwalk is thoughtfully designed to seamlessly connect with the surrounding neighborhood park, creating a harmonious blend of green spaces throughout the precinct. The layout includes a variety of recreational amenities, such as playgrounds, fitness stations for both adults and the elderly, and a rooftop garden atop the Multi-storey Carpark, all strategically placed to foster interaction and strengthen communal bonds.

The expansive green areas are further enriched by ABC rain gardens, which not only provide educational value but also enhance the serene atmosphere of the space. This integration of nature, wellness, and community encourages residents to enjoy the outdoors, relax, and connect with one another.



YISHUN BOARDWALK

Facilities

Community Living Rooms

Situated on the void deck, the community living rooms provide views of lush green spaces, serving as vibrant centers that encourage connections among residents. The beautiful surroundings enhance interaction, enabling residents to appreciate nature while building strong relationships with their neighbors.

Precinct Green Spaces

Inspired by the nearby nature trails, Yishun Boardwalk features lush walking trails lined with active spaces for residents to explore. These active spaces comprise children's playgrounds, adult and elderly fitness corners, a hardcourt, two precinct pavilions, and a residents' network centre.

Children's Playground

Elderly Fitness

Adult Fitness

Precinct Pavilion

Resident Network Centre

Drop-off Porch

Drop-off Porch

Multi-Storey Carpark

Preschool

Adult Fitness

Children's Playground

Elderly Fitness

Drop-off Porch

Precinct Pavilion





YISHUN BOARDWALK

Highlights

3 of the residential blocks in Yishun Boardwalk will come with roof gardens, where residents can enjoy views of the scenic Sungei Khatib Bongsu and the neighbourhood park.

Inspired by the nearby nature trails, Yishun Boardwalk features lush walking trails lined with active spaces for residents to explore. These active spaces intergrate seamlessly with the new neighbourhood park.

The design features seamless connectivity in the common areas that links facilities and residential blocks. This fosters both active and passive spaces, allowing residents to enjoy a variety of green areas



YISHUN BOARDWALK

Welcome to Your
New Home



View from Yishun Avenue 6

