

TAMPINES GREENJADE

A Green Haven

Bounded by Tampines Street 96 and Bedok Reservoir Road, Tampines GreenJade comprises 6 residential blocks with 546 units of 4- and 5-room flats.

Nestled within several park connectors and Bedok Reservoir, its name “Tampines GreenJade” draws inspiration from its green landscape and the site’s quarry heritage.

Tampines GreenJade 位于淡滨尼96街（Tampines Street 96）与勿洛蓄水池路（Bedok Reservoir Road）之间，共有6座住宅楼，提供546个四房式和五房式组屋单位。

项目坐落于多个公园连接道和勿洛蓄水池之间，环境绿意盎然。“Tampines GreenJade” 取名灵感源自其绿色景观和此地原有的采石场遗迹。

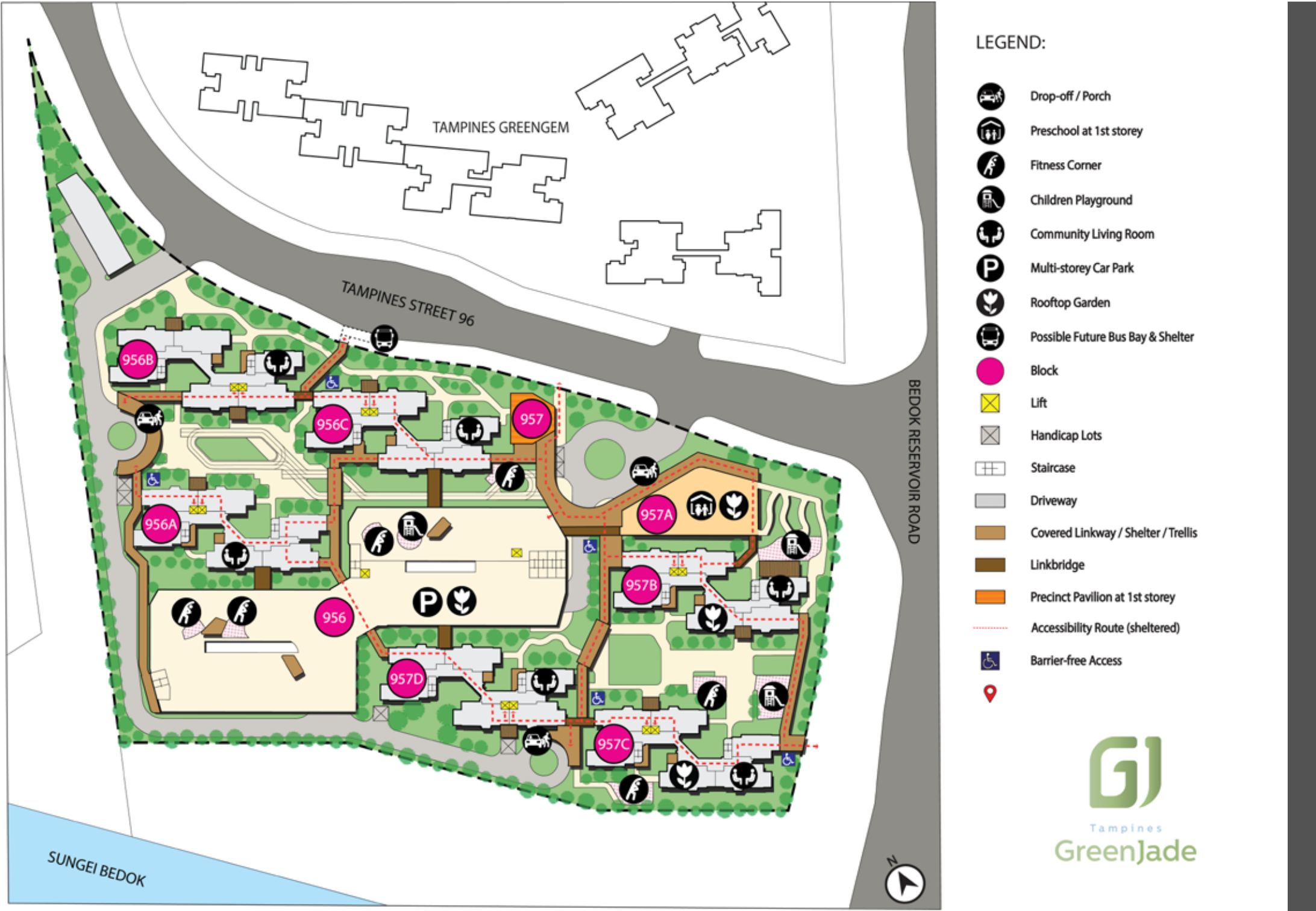
Terletak di antara Tampines Street 96 dan Bedok Reservoir Road, Tampines GreenJade terdiri daripada 6 blok kediaman dengan 546 unit flat jenis 4 bilik dan 5 bilik.

Dikelilingi oleh laluan penghubung taman dan Bedok Reservoir, nama “Tampines GreenJade” diilhamkan oleh landskap hijaunya serta warisan kuari tapaknya.

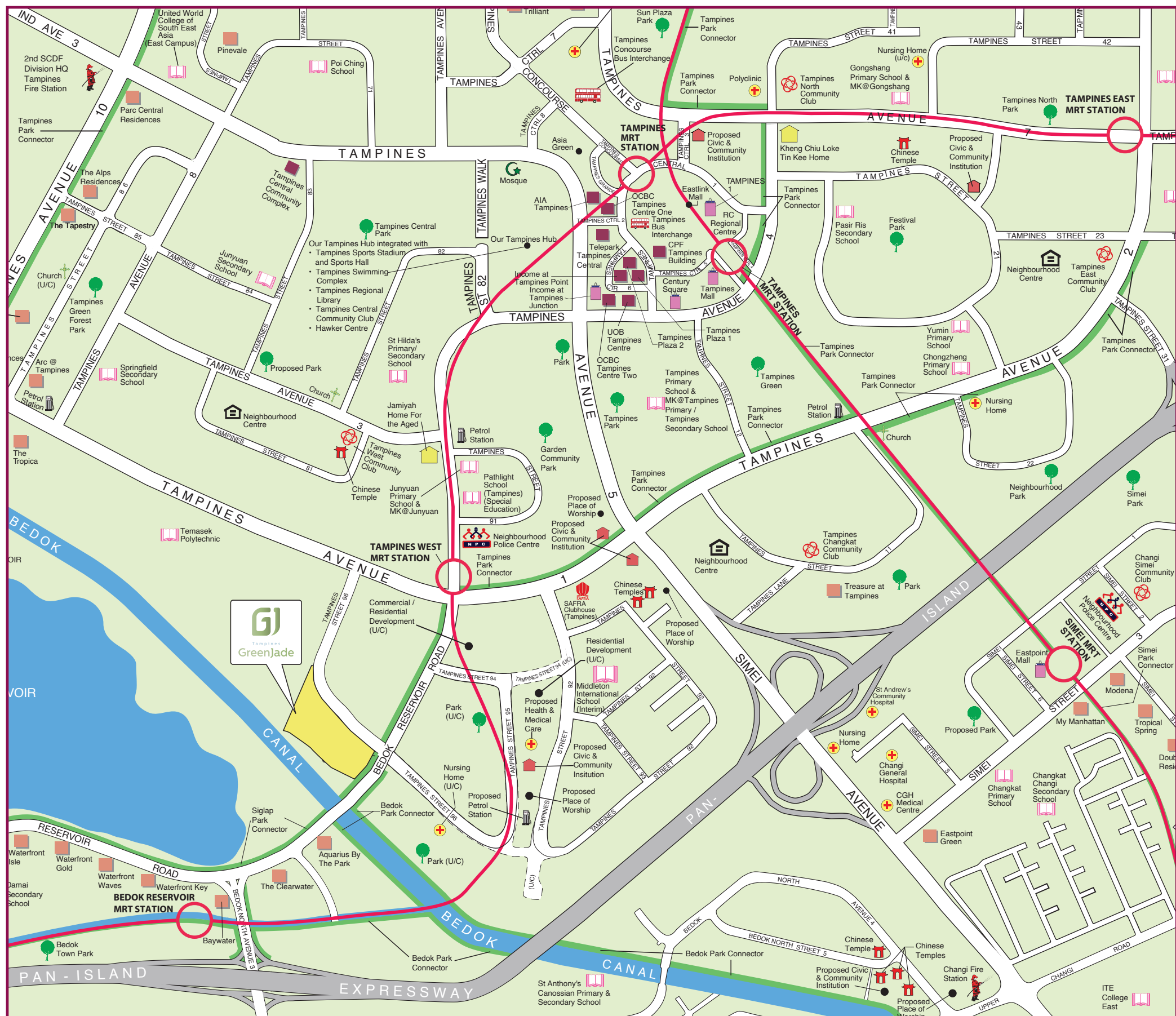
தெம்பனிஸ் ஸ்ட்ரீட் 96 மற்றும் பிடோக் ரெசுவோர் ரோடு இடையே அமைந்துள்ள Tampines GreenJade, 546 நான்கு அறை மற்றும் ஐந்து அறை வீடுகள் கொண்ட 6 குடியிருப்புப் புளோக்குகளை உள்ளடக்கியது.

பல பூங்கா வழித்தடங்கள் மற்றும் பிடோக் நீர்த்தேக்கம் (Bedok Reservoir) அருகில் அமைந்துள்ள இந்தத் திட்டத்தின் “Tampines GreenJade” என்ற பெயர், அதன் பசுமையான சுற்றுப்புறத்தையும், அந்த இடத்தின் சுரங்க வரலாறையும் பிரதிபலிக்கிறது.

Site plan for Tampines GreenJade



Conveniences at your Doorstep



○ MRT Line & Station
MK MOE Kindergarten
=== Under Construction/ Future Road
(u/c) Under Construction

Scale 0 100 200 300 400 500 Metres

Located near to Tampines West MRT station, residents can connect to other transportation nodes such as Tampines MRT station and bus interchange at the Regional Centre. Drivers are also well-connected by the Pan-Island Expressway (PIE).

Travelling to and from Tampines GreenJade is quick, convenient and easy. Please refer to the Land Transport Authority's **Your Tampines GreenJade Travel Guide** for the transport connections around your development.

Residents can access a myriad of amenities and dining options within Tampines Town to meet their daily needs. These include shopping malls such as Tampines 1 and Century Square, heartland shops at the nearby neighbourhood centres and recreational facilities at Our Tampines Hub.

Within Tampines GreenJade, there will be a preschool. Residents can also enjoy facilities such as children's playground, community garden, and resting shelters that are located at the roof garden of the Multi-Storey Car Park, and stay active with purpose-built fitness stations.

Tampines GreenJade will be served by Tampines West Community Club. Check out their activities on **Facebook**, **Instagram** and **Tik Tok** and connect with them through **Tampines West Connect**.

Welcoming Homes

Tampines GreenJade comprises 4- and 5-room flats and are built using the Prefabricated Prefinished Volumetric Construction (PPVC) method.

The flats come with:

- vinyl strip flooring in the living/ dining and bedrooms
- floor tiles in the bathrooms, household shelter, kitchen, service yard and balcony (for 5-room flats)
- wall tiles in the bathrooms and kitchen
- internal doors for bedrooms and folding doors for bathrooms
- sanitary fittings (i.e. wash basin with tap mixer, shower set with bath/shower mixer, and water closet suite)



Eco-Friendly and Smart Living

To encourage an eco-friendly lifestyle, the development is designed with several eco-friendly features such as separate chutes for recyclable waste; parking spaces to facilitate future provision of electrical vehicle charging stations; and bicycle stands to promote cycling as an environmentally friendly mode of transport.

Tampines GreenJade also features smart solutions for a more sustainable and safer living environment. These include the use of smart lighting in common areas to reduce energy usage and smart Pneumatic Waste Conveyance System (PWCS) to optimise the deployment of resources for cleaner and fuss-free waste disposal.



Separate chutes for recyclable waste



Bicycle stands to encourage cycling



ABC Waters design features

© 2025 Housing & Development Board.
All rights reserved.

