

TOWARDS A CLEANER & HEALTHIER NEIGHBOURHOOD

Pneumatic Waste Conveyance System

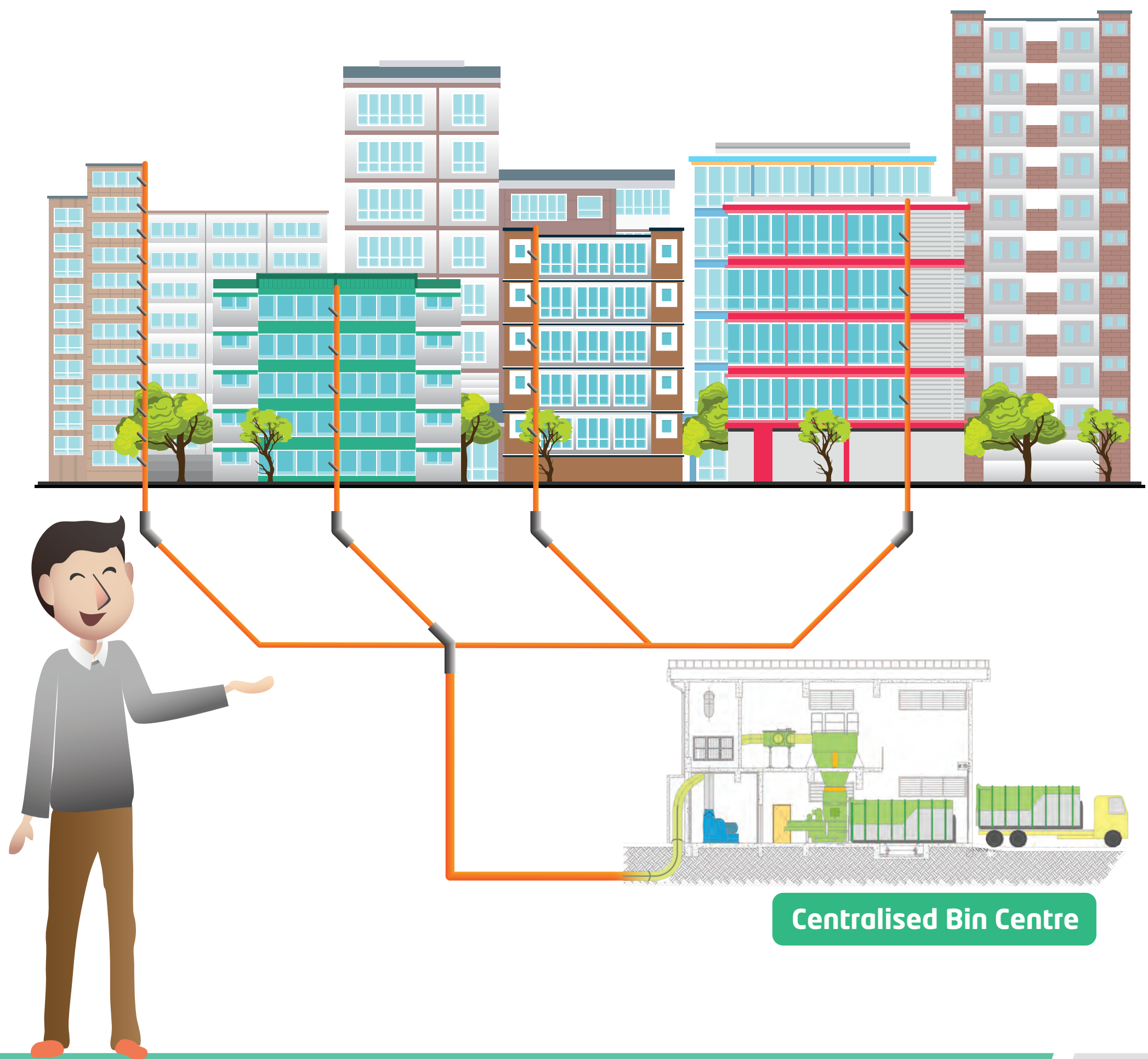
Your precinct has been installed with a Pneumatic Waste Conveyance System (PWCS). You will enjoy a cleaner and greener environment as the PWCS transports refuse by air suction through underground pipes to a central collection area.

您的组屋区已安装了自动化气动垃圾收集系统（PWCS）。PWCS以抽气的方式将垃圾通过地下管送往中央收集站，

让您与居民享有更干净的居住环境。

Presint anda telah dipasang dengan Sistem Pengangkutan Sampah Pneumatik (PWCS). Anda akan menikmati sekitaran yang lebih bersih dan hijau kerana PWCS mengangkut sampah sarap dengan menggunakan sedutan udara melalui paip bawah tanah ke kawasan pengumpulan pusat.

உங்களுடைய வட்டாரத்தில், சாய்வுதள மறுப்பு, வாயுக் கழிவுகள் வெளியேற்ற அமைப்புடன் (PWCS) இணைக்கப்பட்டிருக்கிறது. இந்த முறையின் கீழ், பூமிக்குக் கீழ் உள்ள குழாய்களின் மூலம், குப்பையானவை காற்றால் உறிஞ்சப்பட்டு, மத்திய சேகரிப்பு இடத்திற்குக் கொண்டு செல்லப்படுகின்றது. அதன்மூலம், நீங்கள் சுத்தமான, பசுமையான சுற்றுச் சூழலை அனுபவிக்கமுடியும்.



Benefits of PWCS

Here are some benefits you will enjoy with PWCS;

- Eliminates foul odours emitted from refuse chutes
- Reduces spillage during refuse collection
- Reduces pest infestation
- Reduces noise pollution from waste collection trucks
- Promotes hygienic and cleaner environment

PREVENTION OF CHOKAGE AND RUBBISH CHUTE FIRE



Size of refuse bag should be smaller than the hopper opening.



Extinguish burning items before throwing.



Do not throw long objects and heavy waste into rubbish chute.



Disposing of folded carton boxes, foam packing, curtains or pillows could cause them to expand inside the refuse chute and cause blockage.

FAQ

Q1. What powers the PWCS in Tengah?

Like any common services serving the residents, PWCS will be powered by solar panels and power from the grid.

Q2. How often do we face PWCS clogs?

The PWCS will not clog if waste disposal is properly carried out. For newly completed BTO projects, chokes typically happen during the initial moving-in period due to improper waste disposal by residents, renovation contractors, workers, and movers who dispose of bulky items into the refuse chutes.

Q3. How do I dispose of my bulky refuse in Tengah?

For the removal of bulky refuse such as furniture or large appliances, residents can contact the local Town Council (TC) for assistance.

Semi-bulky waste (e.g. packing waste, carton boxes) can be disposed at the bulky refuse area. This area differs from precinct to precinct. TC will provide the necessary signages and maps to guide residents on where to throw your semi-bulky waste.

