



Sharing On
MACPHERSON WEAVE



MacPherson Weave

Geylang Town Overview

Located near to the city fringe, Geylang town is well-served by different commercial spaces and is known for its urban heritage.

As a mature town, Geylang has a rich history, evolving from its agricultural roots in 1800s to the town it is today.

Over the years, Geylang has transformed from an industrial hub into a vibrant town that offers a variety of commercial, community and recreational amenities for its residents.

With its rich heritage, proximity to various workplaces and a bustling Paya Lebar Sub-regional Centre, Geylang continues to be an attractive and diverse urban living environment for all ages.

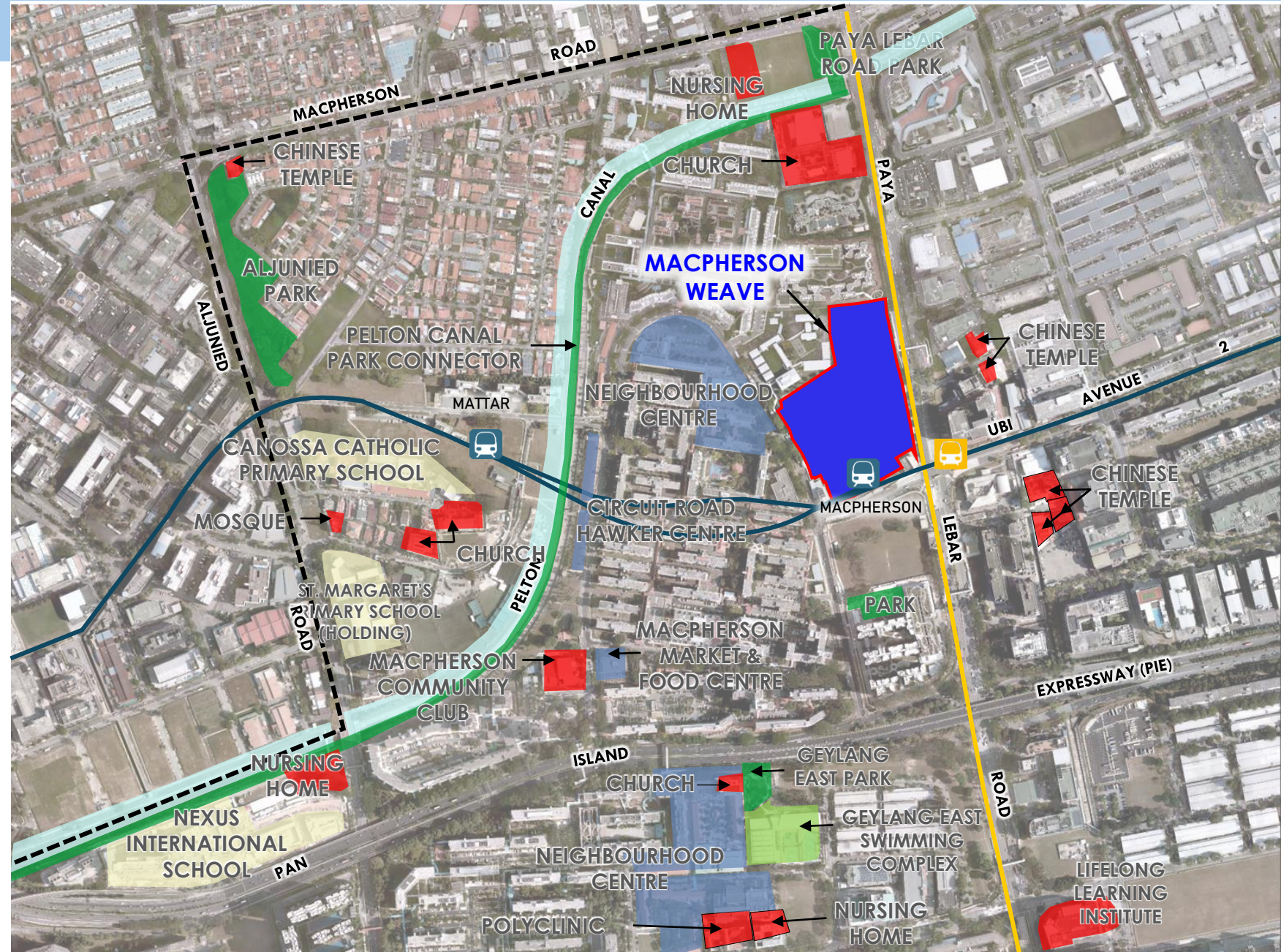


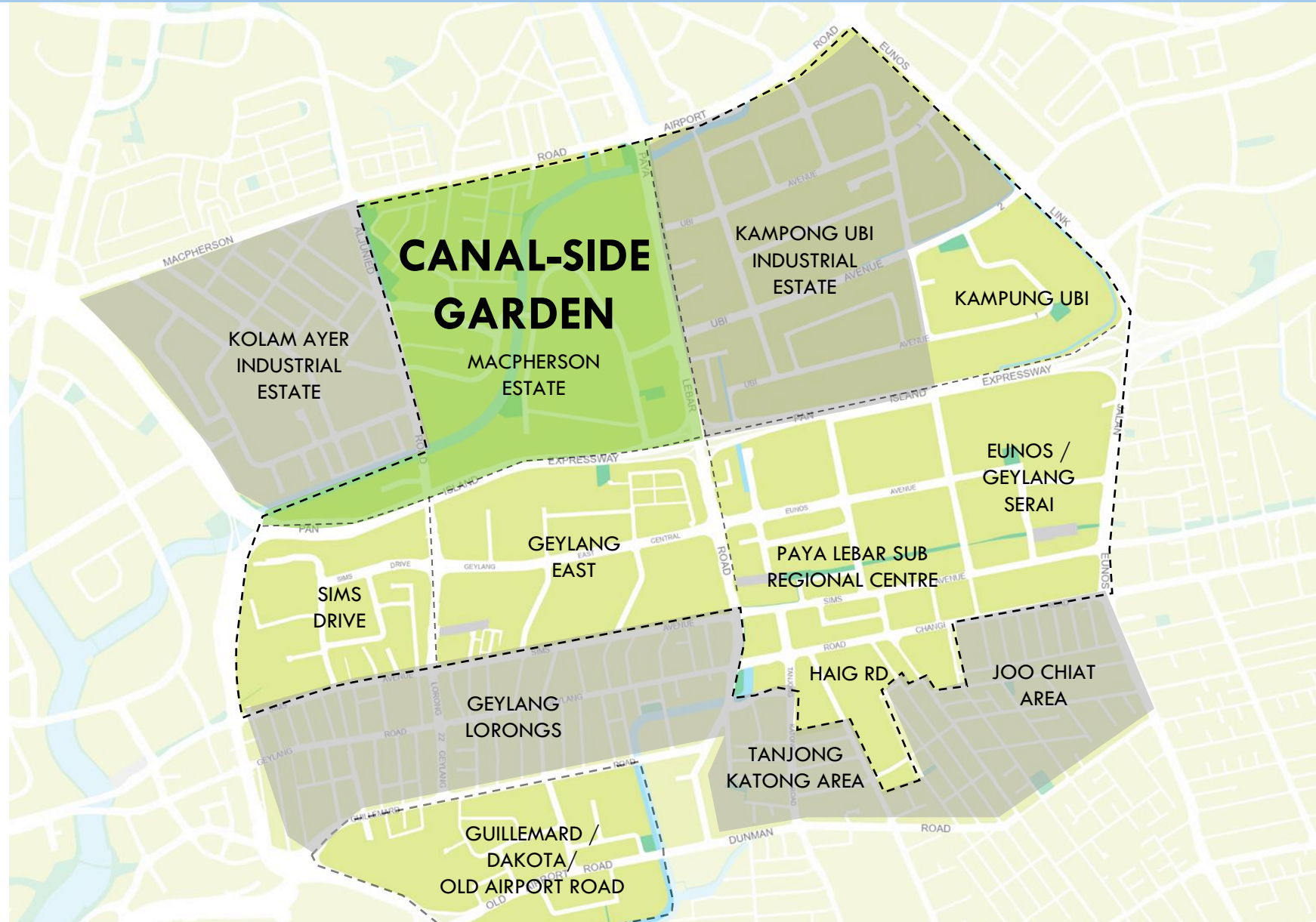
MacPherson Weave



Amenities

- Neighbourhood Centres (Circuit Road and Geylang East)
- Circuit Road Hawker Centre
- MacPherson Market & Food Centre
- Pelton Canal Park Connector
- Geylang East Swimming Complex





MacPherson Weave



Project Description

MacPherson Weave is situated along Circuit Road, Circuit Link and Paya Lebar Road, bordered by MacPherson MRT and MacPherson Blossom.

- The name 'MacPherson Weave' pays homage to its colorful façade which has interweaving bands of colours, inspired by tropical fruits grown in Singapore
- The development will include the *Chap Lau* Walk*, a corridor through the development paying homage to the colourful and retro Aljunied 10-storey HDBs in the area. Along this central spine, fruit and daily items are featured in motifs present in gardens, fitness areas and children's playgrounds, referencing the area's rich history.
- 7 residential blocks ranging from 15 to 19 storeys in height



*Chap Lau means 10-storey in Hokkien.



MacPherson Weave

Precinct Facilities

Children's Playgrounds

Adult & Elderly Fitness Stations

Chap Lau Walk

- Corridor through the development with gardens, fitness areas and children's playgrounds, referencing the area's rich history.

Community Living Rooms

- Community Living Rooms (CLR) are designed with furniture, overlooking into communal and landscaped areas for residents to enjoy nature and socialize.

LEGEND



Chap Lau Walk



Community Living Rooms



Precinct Pavilions

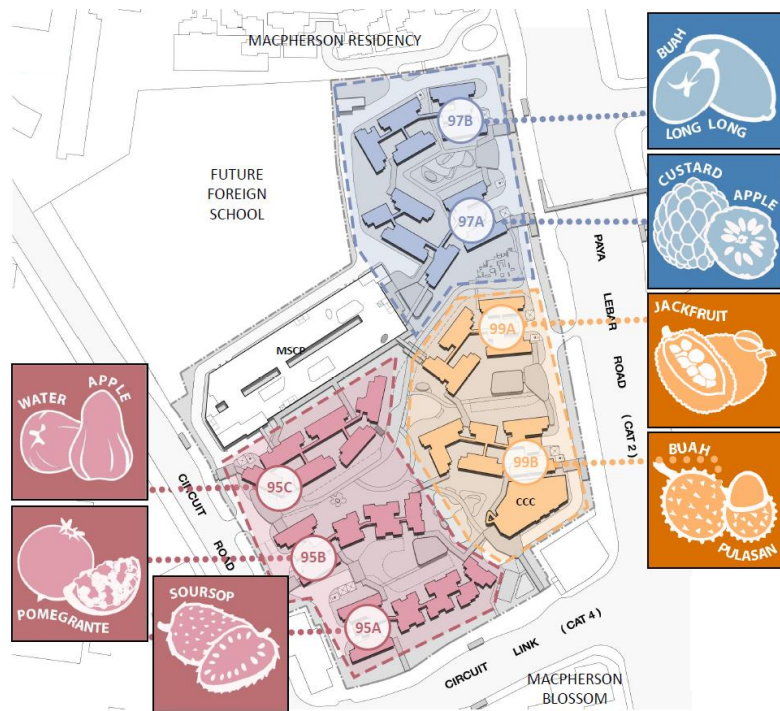
Childcare Centre

MacPherson MRT Station Exits



MacPherson Weave

Special Design Features



Traditional fruits are used in motifs on block signages at key areas such as Community Living Rooms and lift lobbies, to create clear and vibrant wayfinding across the development.

Colour Zoning

Gray Tint
Cameo White
Stone Ridge
Malibu Sunrise
Sunset Orange
Bluebell
Wedgewood
Rose Bundle
Crowned Ruby



The façade design is inspired by colourful tropical fruits and the nearby Aljunied Chap Lau. By weaving three key accent colours of pink, blue, and orange, the apartment blocks stand out within the MacPherson landscape.

Communal Spaces

Gardens, playgrounds, fitness stations and vibrant landscaping within the precinct fosters interaction, exercise, and well-being. These facilities are located close to each other, encouraging inter-generational play and bonding.



Watermelon-inspired playground, following the fruit motif, is located close to the CCC.



Welcome to your NEW HOME

MACPHERSON WEAVE

