

*Sharing on*

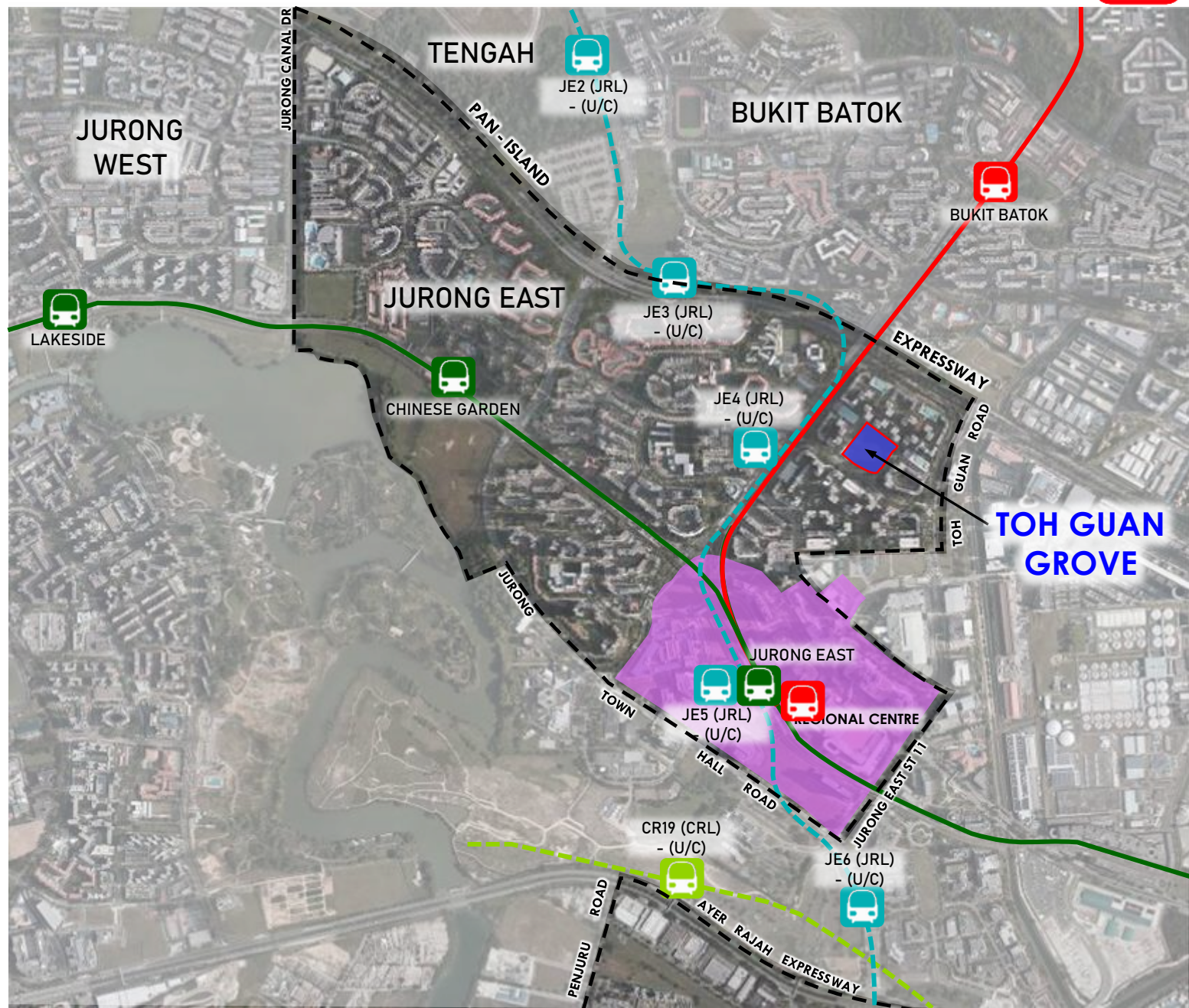
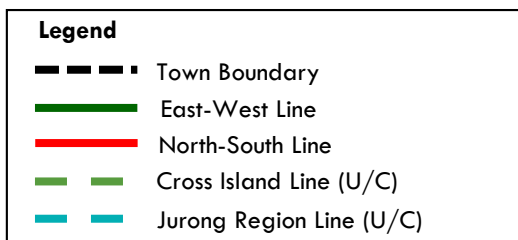
# TOH GUAN GROVE





# Jurong East Town | Overview

- Vibrant town with a diverse variety of commercial, community, and recreational facilities for residents and visitors alike.
- Connectivity and convenience will be enhanced with the completion of the Jurong Region Line (JRL) in 2029, of which JE4 station will open in stage 2 in 2028, to improve accessibility to key destinations across the Jurong region.



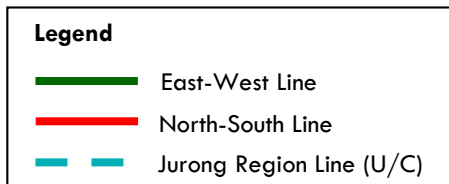




# Jurong East Town |

## Amenities around Toh Guan Grove

- Westgate
- Jem
- Ng Teng Fong General Hospital
- Jurong Community Hospital
- Toh Guan Park





# Toh Guan Grove



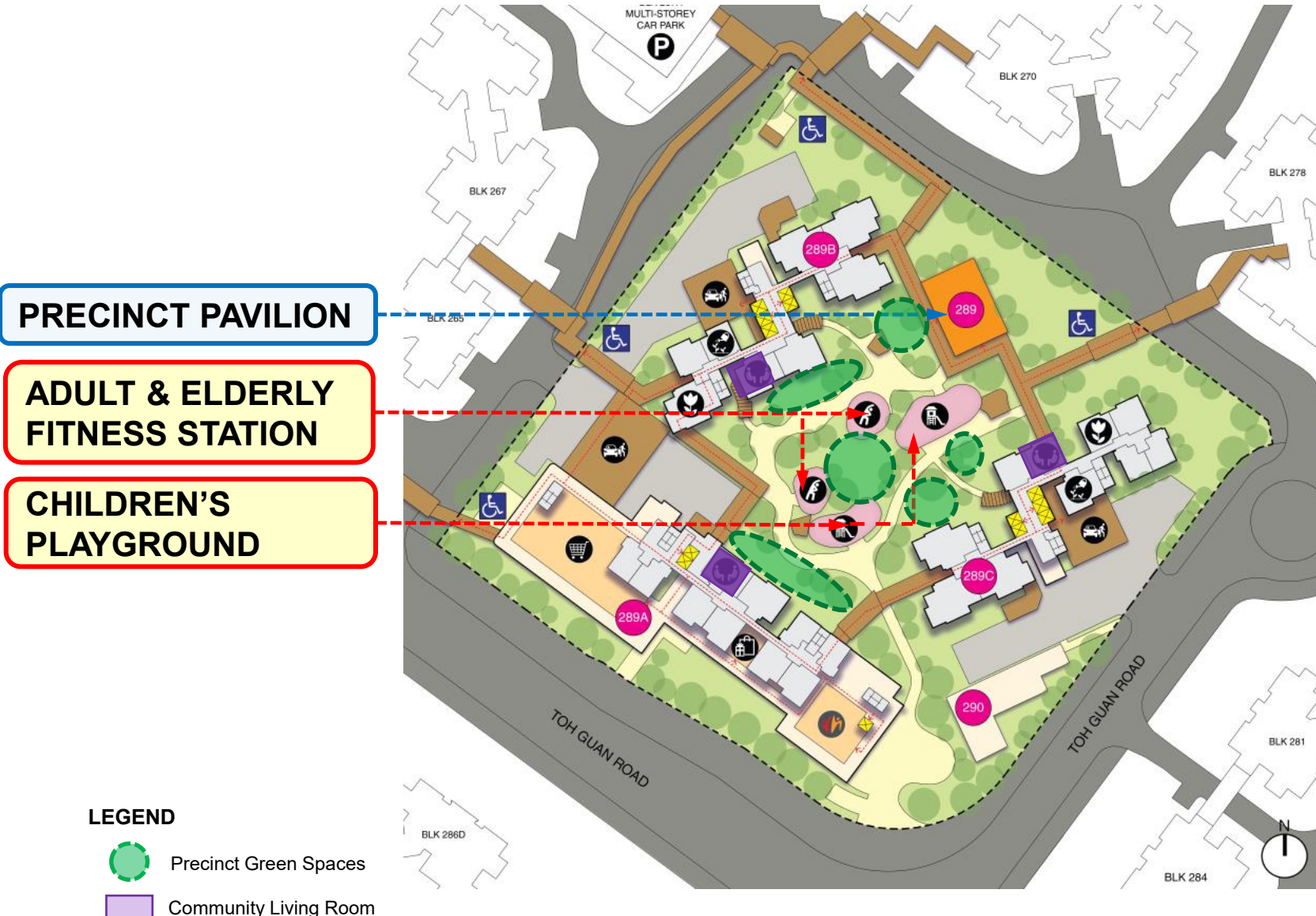
**This development site is strategically located in the center of the Toh Guan Estate. There are a total of 3 residential blocks in the precinct, consisting of 2 nos. of 37/27 storey residential blocks and 1 nos. of 10 storey residential block comprising 569 residential apartment units.**

**The name 'Toh Guan Grove' celebrates the origins of the site, where there were branches of the Pandan River and it is full of mangrove. Hence, the proposed massing, hardscape, softscape and architectural features take cues from the natural form of the mangrove and it is the reminiscent the origin of the site.**





# Toh Guan Grove

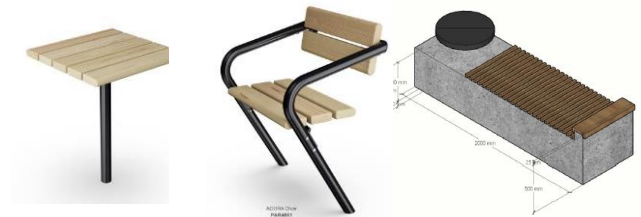


## Precinct Green Spaces

- Green Spaces located in the precinct provide areas for residents to connect with nature, exercise and socialize

## Community Living Rooms

- Community Living Rooms (CLR) are designed with furniture, overlooking to the Green Spaces for residents to enjoy the nature and socialize.



**CLR**  
**Seats and Table for**  
**social gathering**



# Toh Guan Grove



## Vibrant Living

- Roof Gardens are provided for residents to interact and enjoy views out.
- Social communal facilities have easy access towards precinct garden encouraging intergenerational bonding





# TOH GUAN GROVE

*Welcome to your NEW HOME*

