

Sharing on

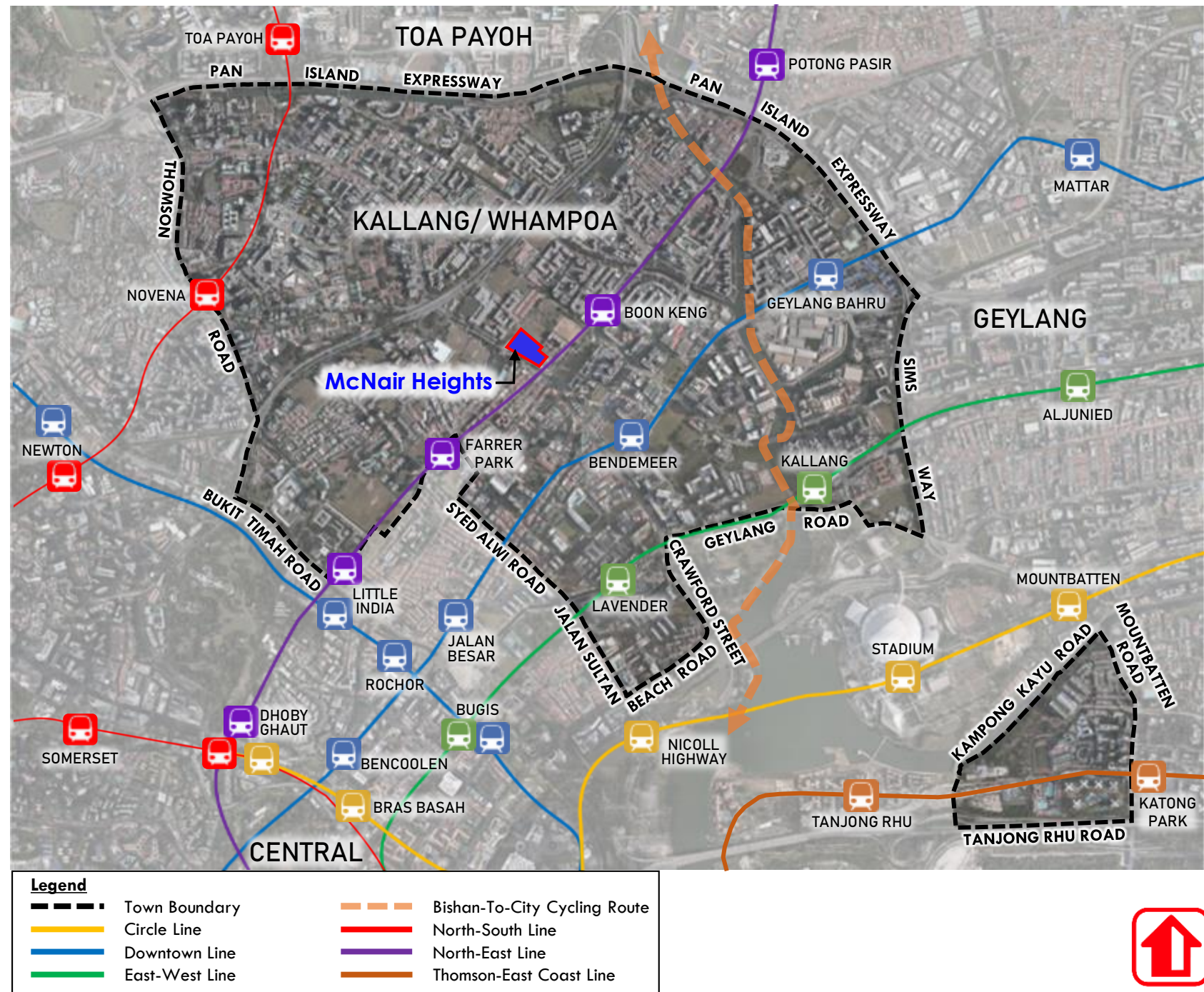


McNair Heights



Kallang / Whampoa Town | Overview

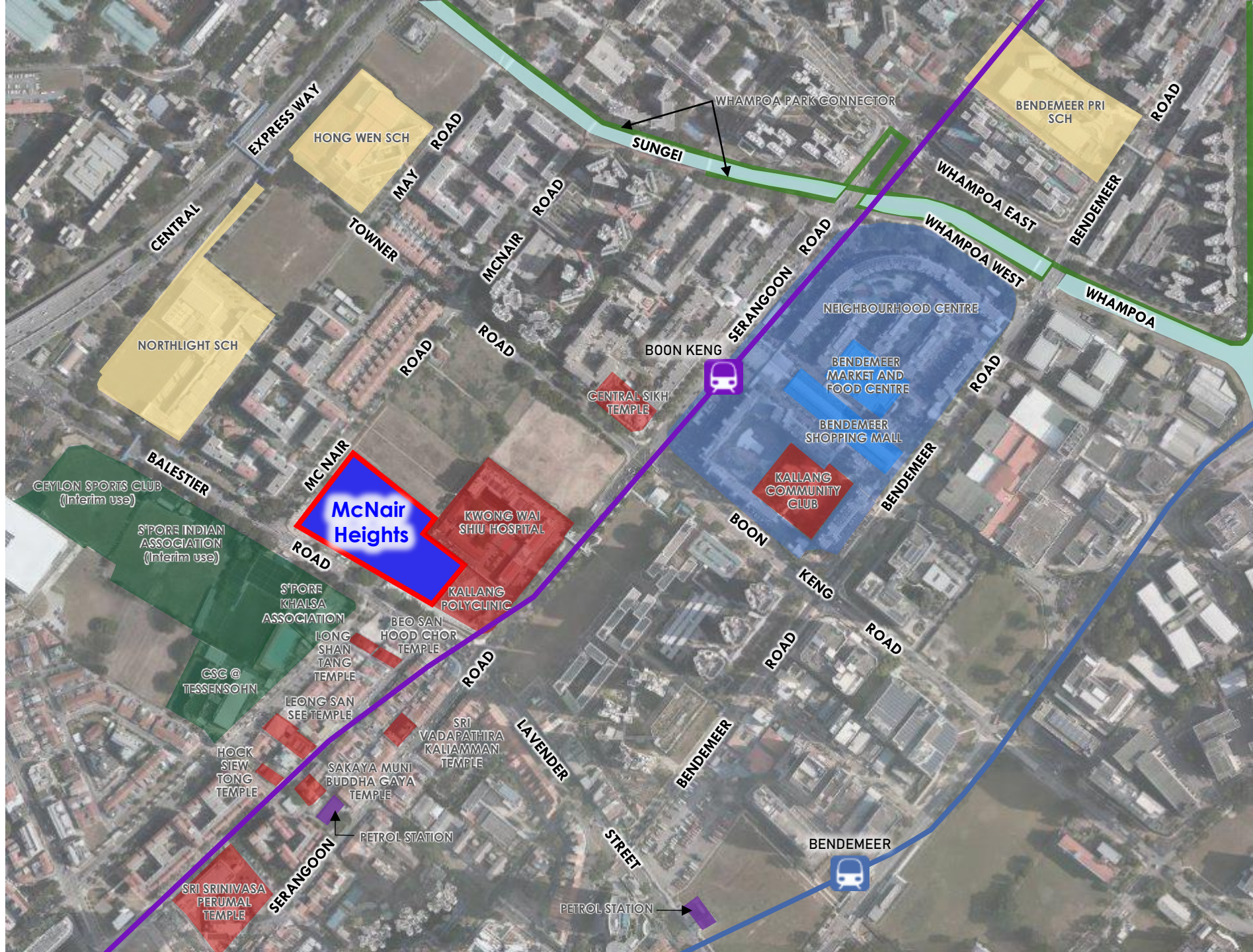
- Located right at the city fringe, with an eclectic mix of landuses from the residential blocks of Bendemeer and Boon Keng to industrial areas of Geylang Bahru. It is also in proximity to the waterfront with Kallang River flowing through the town.
- Upcoming rejuvenation along the Kallang River and the Kallang Alive Precinct will strengthen green, leisure and cycling connectivity, enhancing liveability for residents.



Kallang / Whampoa Town |

Amenities around McNair Heights

- Boon Keng MRT Station
- Bendemeer Shopping Mall
- Bendemeer Market and Food Centre
- Kallang Community Club
- Kallang Polyclinic



Kallang / Whampoa Town |

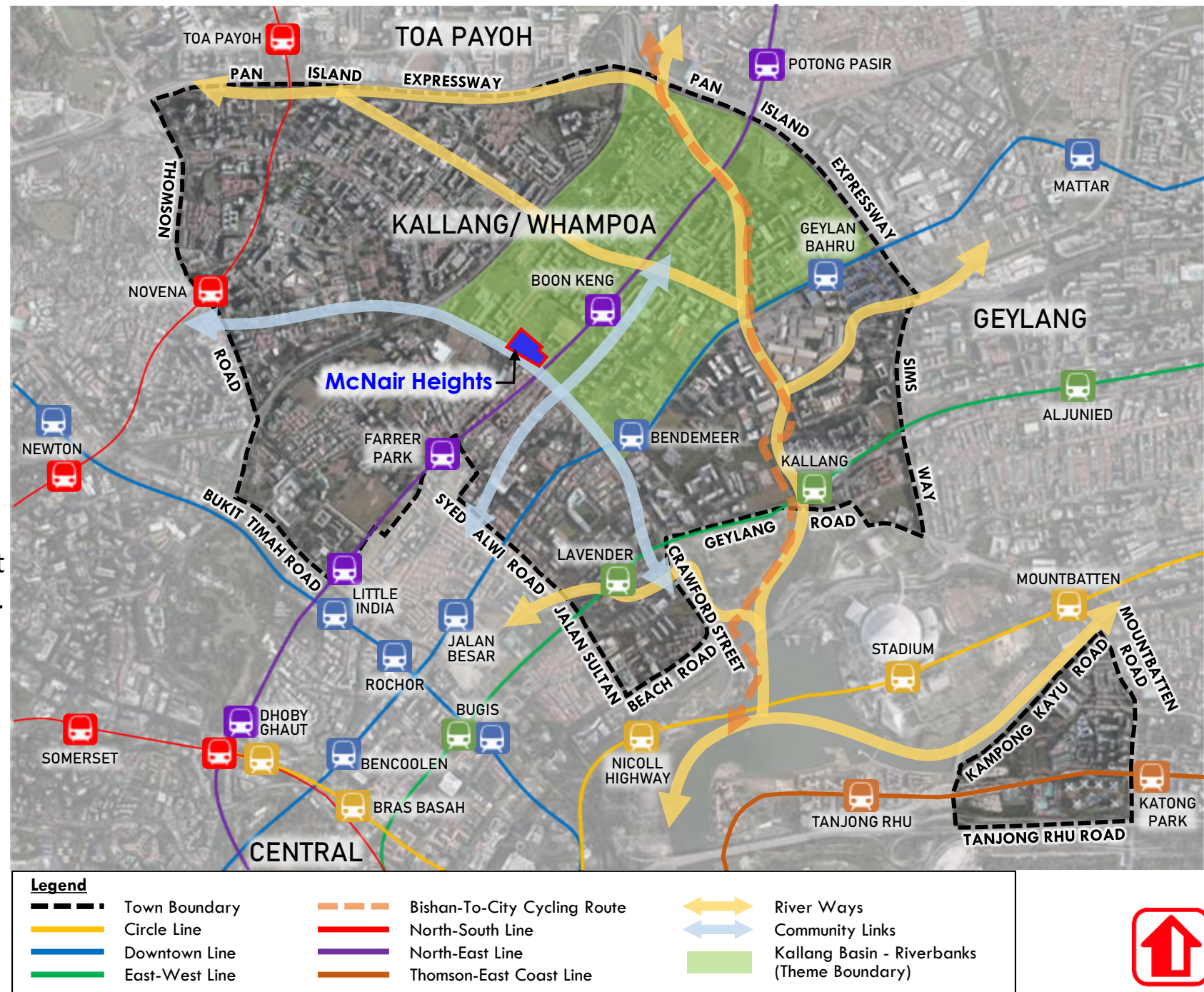
Design Themes

Town Theme: City-fringe Living by the River

- Inspired by Kallang/ Whampoa's city fringe location and the **Kallang River**, where urban living is shaped by strong **heritage elements** and an **interconnected blue-green network** that links the town's diverse neighbourhoods.

Sub-Theme: Kallang Basin – Riverbanks

- Inspired by the riverine qualities of the **Kallang Basin**, this area is characterized by **naturalised riverbanks**, **active riverfront spaces** and a **cohesive streetscape**, reflecting the close relationship between housing, public spaces and the river.



McNair Heights



McNair Heights is a well-planned residential development located between Balestier Road and McNair Road, comprising three residential blocks ranging from 24 to 40 storeys, with one block including rental flats. The development offers 626 units, including 3-room and 4-room flats, as well as 2-room Flexi flats for seniors aged 55 and above under the Short Lease scheme, with lease options from 15 to 45 years.

Residents can enjoy a variety of outdoor amenities, such as children's playgrounds and fitness stations for adults and seniors. A multi-storey car park with a childcare centre at the first storey supports family needs, while a rooftop garden, linked to all blocks via 8th-storey sky bridges, provides a shared communal space.

For added convenience, the development is connected to nearby bus stops and Kallang Polyclinic through sheltered, weather-protected walkways.



McNair Heights



Bus Stop

Drop Off Porch

Drop Off Porch

Precinct Pavilion

Bus Stop

Thoughtfully Planned Living Environment

The residential precinct is designed with generous green spaces between blocks, creating an open, breathable environment that promotes well-being and a strong sense of community.

Inclusive Recreational Amenities for All Ages

Playgrounds, adult fitness corners, and senior exercise stations are strategically distributed throughout the precinct's green spaces, encouraging active lifestyles and inter-generational bonding.



McNair Heights



Convenient and Accessible Drop-Off Points

Each residential block is located near at least one drop-off porch, enhancing daily convenience for residents, particularly families and elderly residents.

Community-Oriented Void Deck Spaces

Every block features a community living space at the void deck level, furnished with urban furniture, serving as informal space where residents can gather and interact.

Well-Planned Buffer and Accessibility to Healthcare Facilities

Between the Kallang Polyclinic and the residential blocks, a multi-storey car park acts as a buffer, separating public activity from McNair Heights' residential spaces while providing convenient access to healthcare services.



McNair Heights

LEGEND:

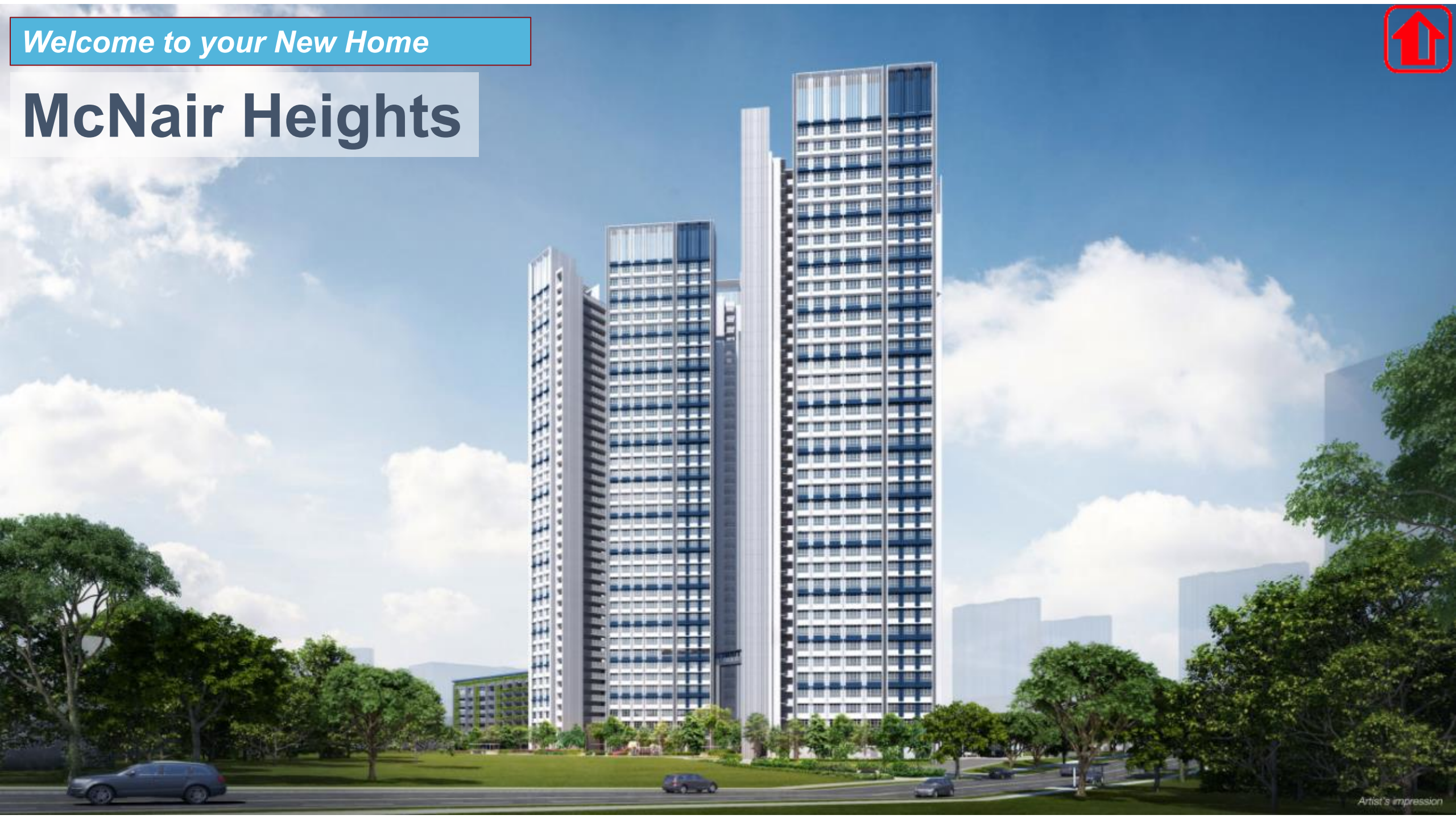
- Drop-off Porch
- Preschool at 1st Storey
- Adult Fitness Station / Elderly Fitness Station
- Children Playground
- Community Living Room
- Rooftop Garden at Car Park
- Space for Community Garden at 8th Storey
- Multi-storey Car Park
- Bus Stop
- Block Number
- Lift
- Staircase
- Driveway
- Covered Linkway / Shelter
- Linkbridge
- Precinct Pavilion
- Accessibility Route (sheltered)





Welcome to your New Home

McNair Heights



Artist's impression