

CASA SPRING @ YISHUN

Nature Haven

Casa Spring @ Yishun is inspired by the lush greenery which forms the backdrop for the development, and identifies with the greenery in Yishun town. Bounded by Yishun Street 42 and Yishun Avenue 6, it is also a stone's throw away from the nearby Everspring Park @ Yishun.

The precinct comprises seven (7) residential blocks, 13-storeys high, with 969 units of 2-room Flexi, 4-room, 5-room and 3Gen flats.

Casa Spring @ Yishun 的设计灵感来自开发项目周围的茂密绿意，彰显了义顺市镇致力于绿色环境的理念。该发展项目位于义顺42街与义顺6道之间，距离义顺 Everspring Park 仅一步之遥。

该住宅区包括7座13层高的住宅大楼，共有969间二房式灵活单位、四房式、五房式和三代同堂组屋单位。

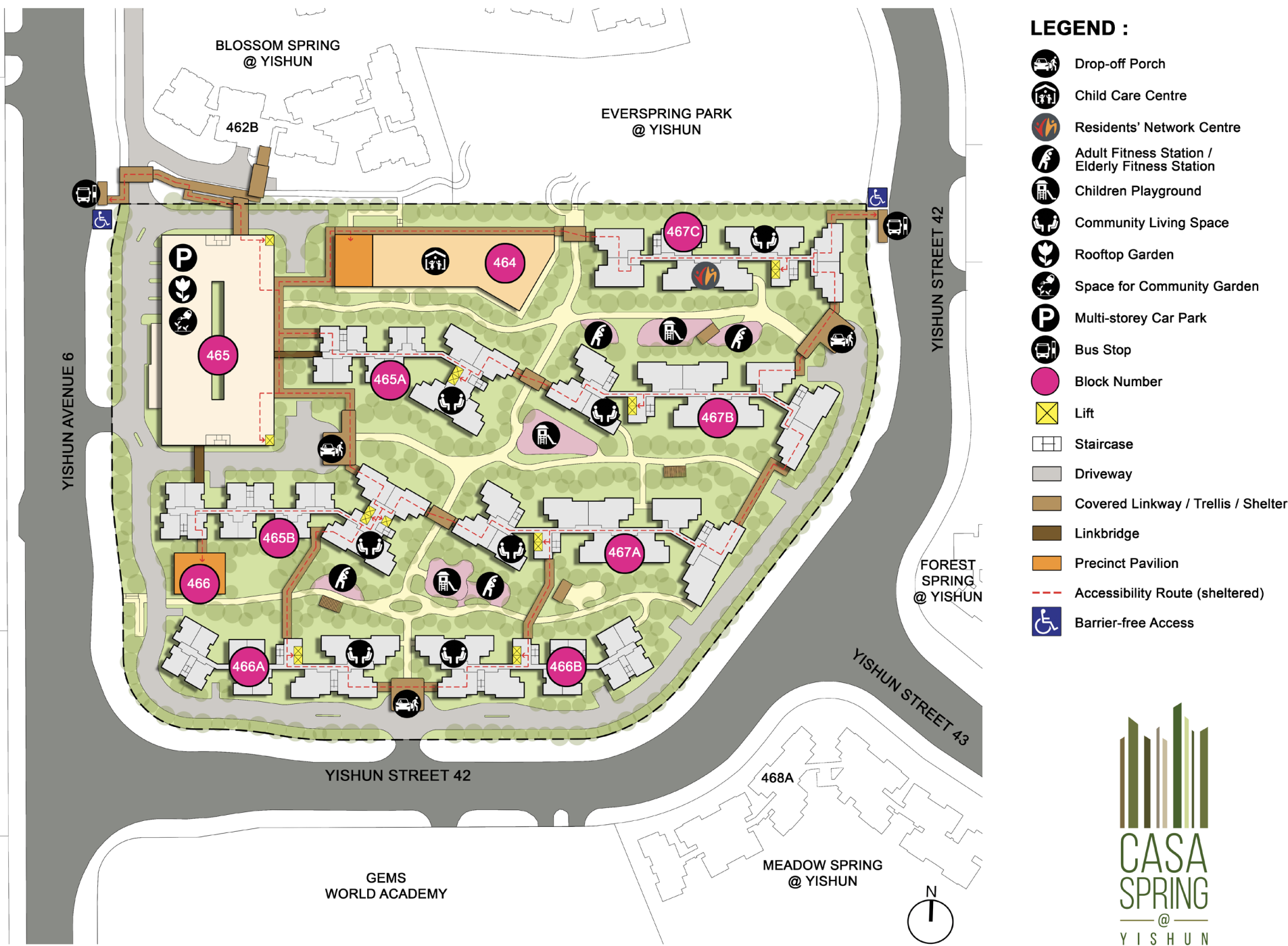
Casa Spring @ Yishun meraih inspirasi daripada kehijauan merimbun yang menjadi latar belakang kepada pembangunan ini, dan mencerminkan kehijauan di bandar Yishun. Disempadani oleh Yishun Street 42 dan Yishun Avenue 6, ia juga tidak jauh dari Everspring Park @ Yishun yang terletak berhampiran.

Presint ini terdiri daripada tujuh (7) buah blok kediaman, setinggi 13 tingkat, dengan 969 unit flat Fleksi 2 bilik, 4 bilik, 5 bilik dan 3Gen.

Casa Spring @ Yishun ஆனது மேம்பாட்டின் பின்னணியாக வழங்கும் பசுமையான செடி கொடிகளால் கவரப்பட்டதோடு, யீஷூன் நகரத்தின் பசுமையையும் பிரதிபலிக்கிறது. யீஷூன் ஸ்ட்ரீட் 42 மற்றும் யீஷூன் அவென்யூ 6 ஆகியவை சூழ அமைந்துள்ள Casa Spring @ Yishun யீஷூனில் அமைந்துள்ள எவர்ஸ்பிரிங் பூங்காவிற்கு அருகாமையில் அமைந்துள்ளது.

இந்தக் கட்டுமானமானது 2-அறை ஃப்ளெக்ஸி, 4-அறை, 5-அறை மற்றும் மூன்று தலைமுறை வீடுகள் என 969 வீடுகளைக் கொண்ட 13-அடுக்கு உயரத்தில் ஏழு (7) குடியிருப்பு புளோக்குகளைக் கொண்டுள்ளது.

Site plan for Casa Spring @ Yishun



Conveniences at Your Doorstep



Casa Spring @ Yishun comes with a range of facilities to allow residents to enjoy daily conveniences at their doorstep, including precinct pavilions, a rooftop garden, children’s playgrounds, as well as adult and elderly fitness stations. There is also a childcare centre and a Residents' Network Centre within the development.

Residents can visit Nee Soon East Park and Everspring Park @ Yishun for their leisure outdoor activities. Residents with school-going children can enroll their children in nearby schools such as North View Primary School, Huamin Primary School, Northbrooks Secondary School, and Chung Cheng High School (Yishun).

The town has medical facilities such as Khoo Teck Puat Hospital and Yishun Polyclinic, and retail amenities such as Northpoint City and Neighbourhood Centres to meet residents’ daily needs.

Casa Spring @ Yishun is a well-connected development. Please refer to the Land Transport Authority’s **Your Casa Spring @ Yishun Travel Guide** for your transport information.

Residents in Casa Spring @ Yishun is served by the Nee Soon Link Community Club which offers a wide range of social activities and programmes. Check out the activities organised by them via **Facebook!**

Find out more about the neighbourhood and explore the interesting **Heartland Spots** within the Town through the 360-degree virtual tours!



Charming Homes

Casa Spring @ Yishun offers 2-room Flexi, 4-room, 5-room and 3Gen flats. These flats are provided with the following finishes and fittings:

<p>2-room Flexi</p> <p>Come in 2 sizes: 36sqm and 45sqm, and are available either on a 99-year lease or short-lease</p>	<p>4-room, 5-room, and 3Gen</p>
<p>Floor finishes in the kitchen, household shelter, and bathroom. Wall tiles are also provided in the kitchen and bathroom. Additionally, these flats come with a sliding partition/ door for the bedroom and a folding bathroom door.</p> <p>Grab bars are fitted into the 2-room Flexi flats on short-leases, which are meant for the elderly.</p>	<p>Floor finishes in the kitchen, household shelter, service yard, and bathrooms. Wall tiles are also provided in the kitchen and bathrooms.</p>

All new HDB flats have Universal Design features such as wider internal corridors, and ramps at the main entrance and bathrooms.



Eco-Friendly Living

To encourage an eco-friendly lifestyle, Casa Spring @ Yishun comes with several eco-friendly features such as:

- Separate chutes for recyclable waste
- Motion sensor-controlled energy efficient lighting at staircases to reduce energy consumption
- Regenerative lifts to reduce energy consumption
- Eco-pedestals in bathrooms to encourage water conservation
- Bicycle stands to encourage cycling as an environmentally friendly form of transport
- Parking spaces to facilitate future provision of EV charging
- Use of sustainable and recycled products in the development
- Pneumatic Waste Conveyance System for cleaner waste disposal



Separate chutes for recyclable waste



Eco-pedestals



Bicycle stands

© 2022 Housing & Development Board.
All rights reserved.

