

# MACPHERSON BLOSSOM

## A Desired Destination

Bounded by Circuit Road, Circuit Link, and Paya Lebar Road, MacPherson Blossom brings you the perks of a modern home amid the charms of a mature estate.

This development comprises 3 residential blocks ranging from 17 to 19 storeys, and has 630 units of 2-room Flexi, 3-, 4-, and 5-room flats.

A wide variety of amenities has been provided for residents' convenience. This includes 2 eating houses, a supermarket, shops, a preschool, and elderly facilities. Other recreational and communal options provided include a playground, fitness stations, and a roof garden above the multi-storey carpark.

MacPherson Blossom 以循环路 (Circuit Road)、Circuit Link 和巴耶利峇路 (Paya Lebar Road) 为界, 为您带来现代住宅的便利并同时沉浸于成熟社区的魅力中。

此项目由 3 栋 17 至 19 层高的住宅楼组成, 包括 2 房式灵活组屋、3 房式组屋、4 房式组屋和 5 房式组屋, 总共 630 间单位。

为了居民的方便, MacPherson Blossom 提供了各种各样的便利设施。这包括两家餐饮店、一家超市、商店、一所幼儿园和乐龄设施。其他娱乐和公共设施包括游乐场、健身站以及在多层停车场上方的屋顶花园。

Dibatasi oleh Circuit Road, Circuit Link dan Paya Lebar Road, MacPherson Blossom membawakan anda keistimewaan sebuah rumah moden di tengah-tengah keindahan sebuah estet yang matang.

Pembangunan ini terdiri daripada 3 blok kediaman antara 17 hingga 19 tingkat, dan mempunyai 630 unit flat Fleksi 2 bilik, 3-, 4- dan 5 bilik.

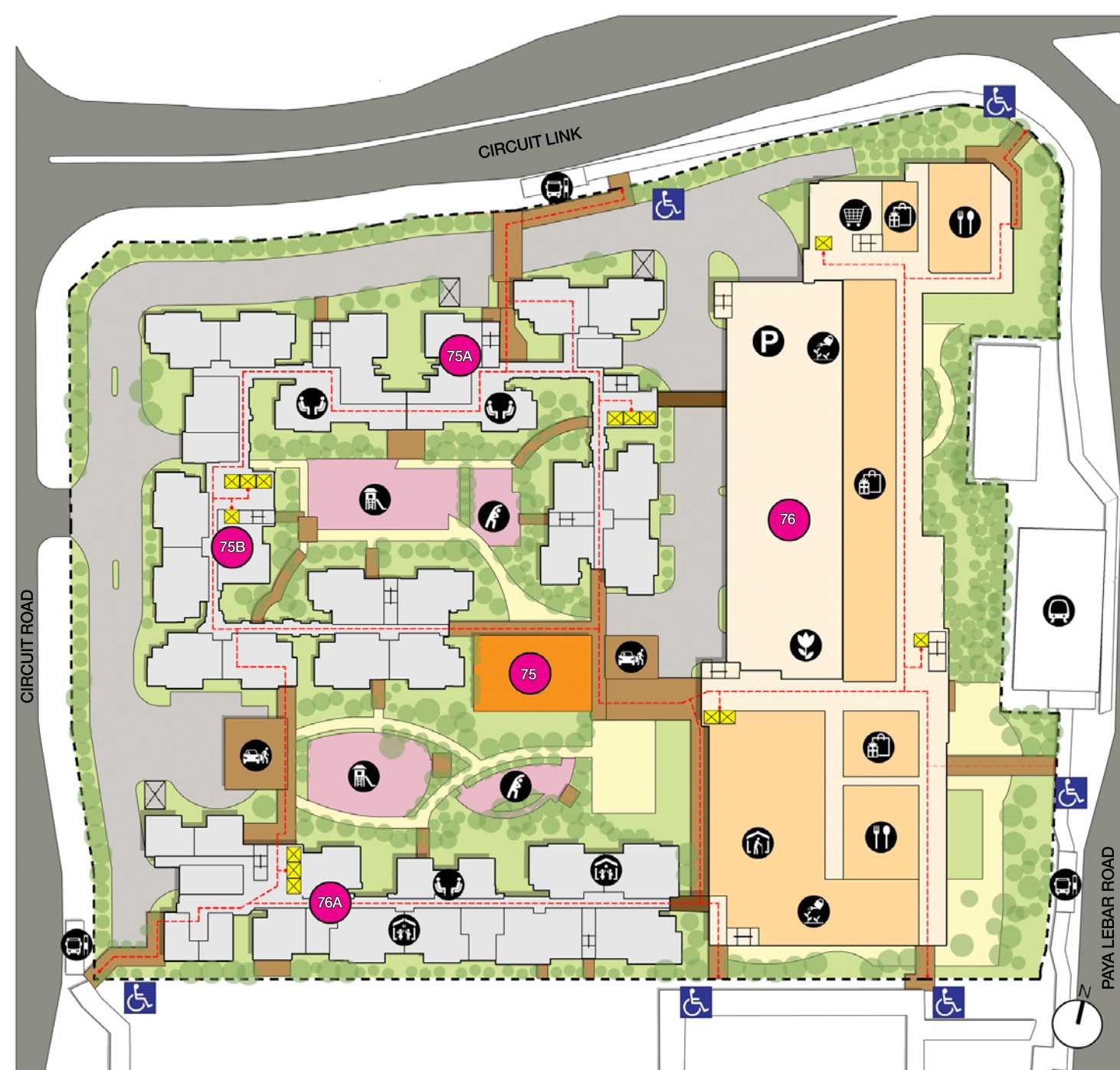
Pelbagai kemudahan telah disediakan untuk keselesaan penghuni. Ini termasuk 2 rumah makan, pasar raya, kedai, prasekolah dan kemudahan warga emas. Pilihan rekreasi dan komunal lain yang disediakan termasuk taman permainan, stesen kecergasan dan taman atas bumbung di atas tempat letak kereta berbilang tingkat.

சர்க்யூட் ரோடு, சர்க்யூட் லிங்க், மற்றும் பாயா லேபார் ரோடால் சூழப்பட்டுள்ளது MacPherson Blossom. முதிர்ந்த குடியிருப்புப்பேட்டையின் அழகுக்கிடையே அமைந்துள்ள இவ்வீடுகள் உங்களுக்கு ஒரு நவீன வீட்டில் இருக்கக்கூடிய அனைத்து நன்மைகளையும் வழங்குகின்றன.

இம்மேம்பாட்டில் மொத்தம் 3 குடியிருப்புக் கட்டடங்கள் உள்ளன. இவை ஒவ்வொன்றிலும் 17 முதல் 19 மாடிகள் உள்ளன, 2-அறை ஃப்ளெக்சி, 3-, 4-, மற்றும் 5-அறை வீடுகளை மொத்தம் 630 வீடுகள் உள்ளன.

குடியிருப்பாளர்களின் செளகரியத்திற்காகப் பல்வேறு வசதிகள் செய்துதரப்பட்டுள்ளன. இங்கு 2 உணவுக் கடைகள், ஒரு பேரங்காடி, கடைகள், பாலர்பள்ளி மற்றும் முதியோர்களுக்கான வசதிகள் உள்ளன. இதில் பொழுதுபோக்கு மற்றும் சமூகம் சார்ந்த வசதிகளும் உள்ளன. இதில் விளையாட்டு மைதானம், உடற்பயிற்சி நிலையங்கள், மற்றும் பல அடுக்குமாடி கார்நிறுத்தமிடத்தில் உள்ள மேற்கூரை தோட்டங்கள் ஆகியவை அடங்கும்.

Site plan for MacPherson Blossom



- LEGEND:**
- Drop-off Porch
  - Shops at 1st & 2nd storey
  - Supermarket at 2nd storey
  - Eating House at 1st storey
  - Elderly Facility at 1st storey
  - Child Care Centre at 1st storey
  - Adult Fitness Station / Elderly Fitness Station
  - Children Playground
  - Community Living Room
  - Rooftop Garden at Car Park
  - Space for Community Garden at Roof
  - Multi-storey Car Park
  - MRT Station
  - Bus Stop
  - Block Number
  - Lift
  - Handicap Lots
  - Staircase
  - Driveway
  - Linkbridge
  - Covered Linkway/Trellis/Shelter
  - Precinct Pavilion
  - Accessibility Route(sheltered)
  - Barrier-free Access

MacPherson Blossom



# Conveniences at your Doorstep



○ MRT Line & Station (u/c) Under Construction = Future Road / Under Construction

Residents can rely on the MacPherson MRT Station, which is an interchange station for the Circle and Downtown lines, for their travel needs. The Pan Island Expressway (PIE) is also a short drive from the development. Please refer to the Land Transport Authority's **Your MacPherson Blossom Travel Guide** to find out more about the transport connections in your development.

Residents may visit the nearby commercial malls around Paya Lebar MRT station for a wide variety of food choices and goods and services, or enjoy fresh produce and local delights at the markets and food centres along Circuit Road.

Within the development, there are 2 eating houses, a supermarket, shops, a preschool, and elderly facilities, providing daily convenience to residents.

Residents can enjoy outdoor recreational facilities at their doorstep, such as a playground, fitness stations, and a roof garden above the multi-storey carpark. There are also amenities such as the Geylang East Swimming Complex and Geylang Polyclinic nearby.

Residents can participate in community events with your neighbours at the nearby MacPherson Community Club. Follow the **MacPherson Community Club Facebook page** to find out more on the activities available!

Find out more about your neighbourhood and explore the interesting **Heartland Spots** within your Town through the 360-degree virtual tours!



# Delightful Homes

MacPherson Blossom has 2-room Flexi, 3-, 4- and 5-room flats, with a well-designed and functional interior.

- 2-room Flexi flats (available either on a 99-year lease or short-lease) come with:
- Floor tiles in the kitchen, household shelter, and bathroom
  - Wall tiles in the kitchen and bathroom
  - A sliding partition/door for the bedroom and folding bathroom door
  - Grab bars (for 2-room Flexi flats on short-leases)

- The 3-, 4-, and 5-room flats come with:
- Floor tiles in the kitchen, household shelter, service yard, and bathrooms
  - Wall tiles in the kitchen and bathrooms





# Eco-Friendly Living

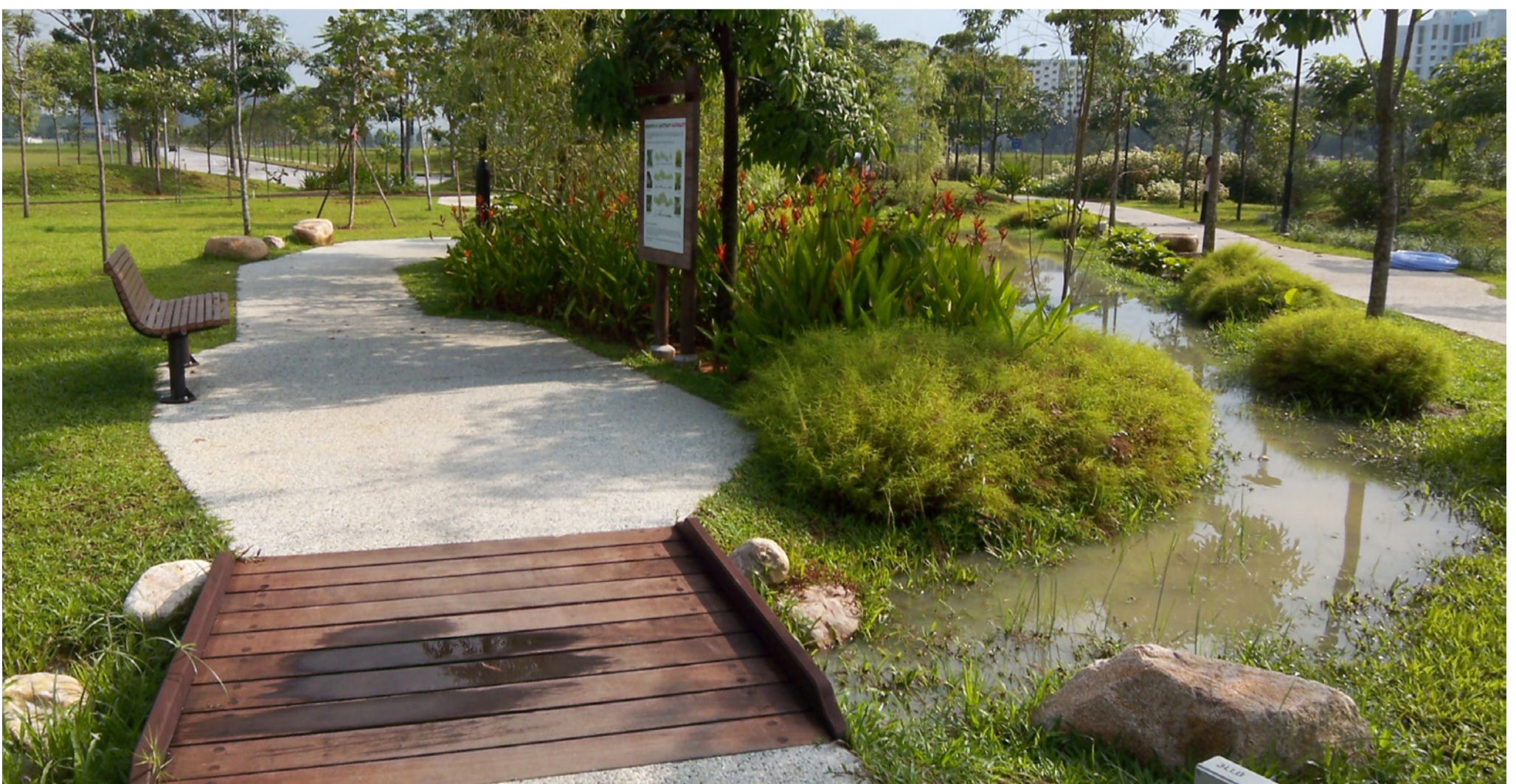
To encourage a green and sustainable lifestyle among residents, MacPherson Blossom is designed with several eco-friendly features such as separate chutes for recyclable waste; bicycle stands to encourage cycling as an environmentally friendly form of transport; parking spaces to facilitate car-sharing schemes; smart lighting and regenerative lifts in common areas to reduce energy usage; use of sustainable and recycled products in the development; ABC Waters design feature to clean rainwater and beautify the landscapes.



Separate chutes for recyclable waste



Bicycle stands to encourage cycling



ABC Waters design features

© 2024 Housing & Development Board.  
All rights reserved.

