

# DAKOTA BREEZE

## Contemporary Living

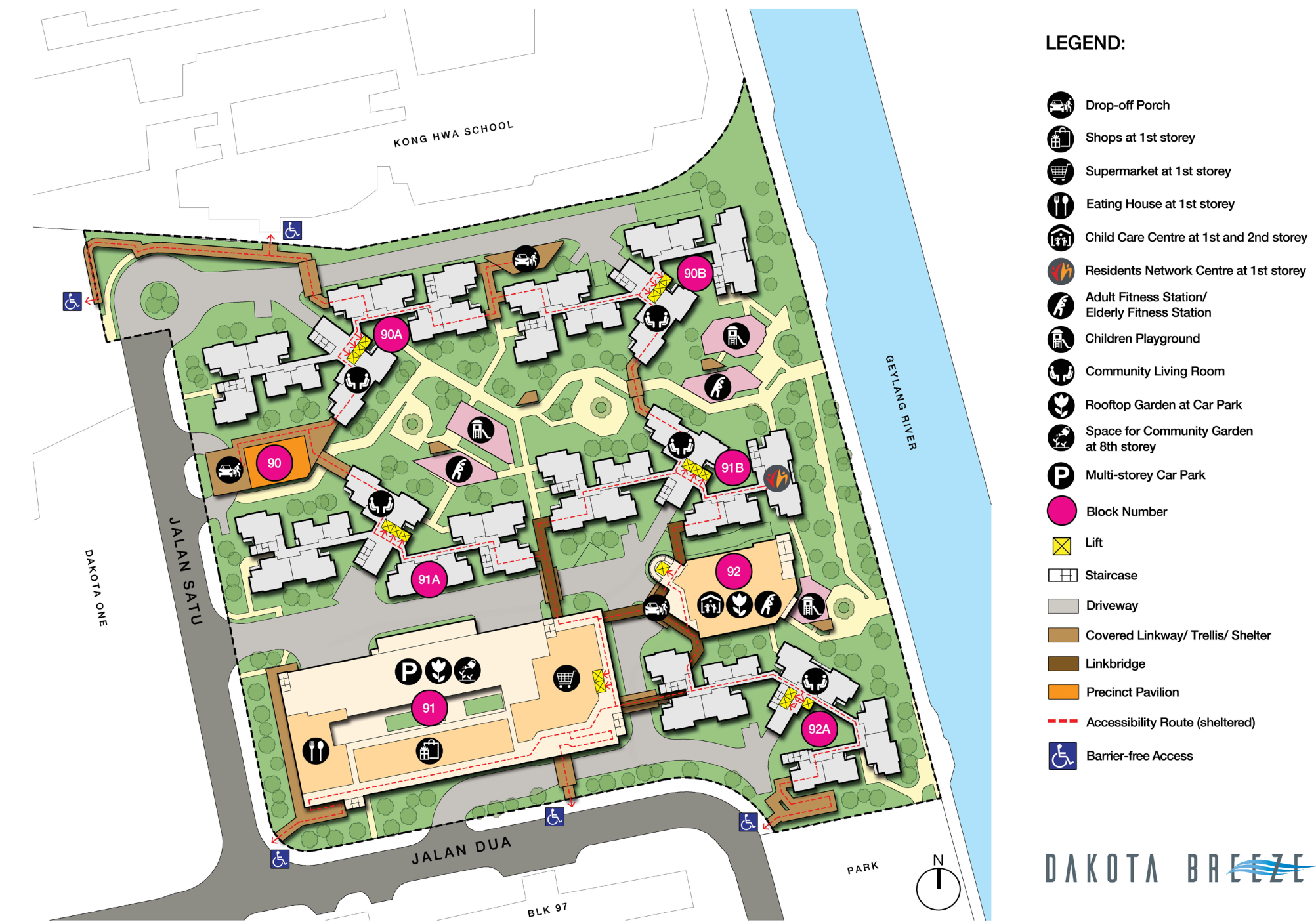
Comprising 5 18-storey residential blocks offering 954 units of 2-room Flexi, 3-, and 4-room flats, Dakota Breeze is located near Dakota MRT station, beside the Geylang Park Connector and Geylang River.

Dakota Breeze 包括5座18层高的组屋楼组成，共有954个单位，分别是二房式灵活、三房式和四房式组屋。该住宅项目以惹兰沙都和惹兰都亚为界，邻近达科达地铁站，旁边就是芽笼公园连道和芽笼河。

Dakota Breeze terdiri daripada lima (5) buah blok kediaman setinggi 18 tingkat dengan sejumlah 954 unit flat Fleksi 2, 3 dan 4 bilik. Ia bersempadankan Jalan Satu dan Jalan Dua dan terletak berhampiran stesen MRT Dakota, bersebelahan dengan Penghubung Taman Geylang dan Sungai Geylang.

Dakota Breeze ஐந்து (5) 18-அடுக்குக் குடியிருப்புத் தொகுதிகளை உள்படக்கியுள்ளது, இவற்றில் 2-அளற ஃப்தைக்ஸி, 3-மற்றும் 4-அளற வீடுகள் என தமொத்தம் 954 அலகுகள் உள்ளன. இது டககொட்டொ தெருவிளைவு இயைில் நில்லயத்திற்கு அருகக, ககலொங் பூங்கொ இளைப்பு மற்றும் ககலொங் நதிக்குப் கெகத்தில், ஜொலொன் சொது மற்றும் ஜொலொன் ஆகியளவ சூழ அளமந்துள்ளது.



Site plan for Dakota Breeze




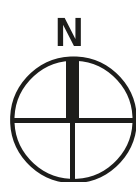


# Conveniences at your Doorstep



**LEGEND:**  MRT Line & Station (u/c) Under Construction  
 Future Road / Under Construction

Scale 0 200 400 600 Metres  
  
100 300 500



Travelling to and from Dakota Breeze is quick, convenient and easy. Please refer to the Land Transport Authority's **Your Dakota Breeze Travel Guide** for the transport connections in your development. Besides an existing market and 2 food centres around the development, there is also a supermarket, an eating house, shops, a child care centre and a Residents' Network Centre within Dakota Breeze, and residents will find daily conveniences within easy reach.

Residents can look forward to the new Mountbatten Community Club when it is redeveloped within the next few years and it will be located within walking distance from the precinct.

Dakota Breeze will be served by Mountbatten Community Club. Check out the activities organised by them via **facebook**.



# Delightful Homes

Dakota Breeze offers 2-room Flexi, 3-, and 4-room flats.

The 2-room Flexi flats come in 2 sizes: 36sqm and 45sqm, and are available either on a 99-year lease or short-lease. These flats come with:

- floor finishes in the kitchen, household shelter, and bathroom
- wall tiles provided in the bathroom and kitchen
- a sliding partition/ door for the bedroom and folding bathroom door

As the 2-room Flexi flats on short-leases are meant for the elderly, they will be fitted with grab bars.

The 3- and 4-room flats will come with floor finishes in the kitchen, household shelter, service yard, and bathrooms. Wall tiles will also be provided in the kitchen and bathrooms.

Some 4-room flats in Dakota Breeze come with a balcony in the living room.

All new HDB flats have Universal Design features such as wider internal corridors, and ramps at the main entrance and bathrooms.





# Eco-Friendly Living

To encourage an eco-friendly lifestyle, the development is designed with several eco-friendly features such as separate chutes that are provided for recyclable wastes, eco-pedestals in bathrooms and bicycle stands.



Separate chutes for recyclable waste



Eco-pedestals



Bicycle stands

© 2021 Housing & Development Board.  
All rights reserved.

