

GARDEN VALE @ TENGAH

At Home with Nature

Garden Vale @ Tengah is located in the Garden District of Tengah town, and is bounded by Plantation Crescent, Tengah Boulevard and Tengah Drive. There are 8 residential blocks in the development ranging from 7 to 14 storeys, creating the tapered look of valleys nestled amid garden spaces. The development has 987 units of 2-room Flexi, 3-, 4-, and 5-room flats.

Homes in Garden Vale are surrounded by lush greenery and nature, where residents can enjoy quality living and connect with the community in a myriad of amenities and green spaces.

Garden Vale @ Tengah 位于登加镇的花园区，并以 Plantation Crescent、Tengah Boulevard 和 Tengah Drive 为界。该开发项目有8座住宅楼，楼高从7至14层，形成了峡谷般的锥形外观，融入了花园空间。该项目包括2房式灵活组屋、3房式组屋、4房式组屋和5房式组屋，总共987间单位。

Garden Vale 的住宅被绿意盎然的大自然环绕，居民可以在这里享受优质的生活，并在众多的便利设施和绿色空间中与社区保持联系。

Garden Vale @ Tengah terletak di Daerah Taman bandar Tengah, dan bersempadan dengan Plantation Crescent, Tengah Boulevard dan Tengah Drive. Terdapat 8 blok kediaman dalam Pembangunan ini, antara 7 hingga 14 tingkat, mewujudkan rupa sebuah lembah tirus yang terletak di tengah-tengah ruang taman. Pembangunan tersebut mempunyai 987 unit flat Flexi 2 bilik, 3-, 4-, dan 5 bilik.

Kediaman-kediaman di Garden Vale dikelilingi oleh kehijauan dan alam semula jadi yang subur, di mana para penduduk boleh menikmati kehidupan berkualiti dan berhubung dengan masyarakat dalam pelbagai kemudahan dan ruang-ruang hijau.

Garden Vale @ Tengah, தெங்கா நகரத்தின் பூங்கா மாவட்டத்தில் அமைந்துள்ளது. இது பிளான்டேஷன் கிரசண்ட் (Plantation Crescent), தெங்கா புலவார்ட் (Tengah Boulevard) மற்றும் தெங்கா டிரைவ் (Tengah Drive) ஆகியவற்றால் சூழப்பட்டுள்ளது. இம்மேம்பாட்டில் 7 முதல் 14 மாடிகள் கொண்ட, பூந்தோட்ட வெளிகளில் அமைந்துள்ள பள்ளத்தாக்குகள் போல் காட்சியளிக்கும் 8 குடியிருப்பு புளோக்குகள் உள்ளன. இவற்றில் 2-அறை ஃப்ளெக்சி, 3-, 4- மற்றும் 5-அறை வீடுகள் என மொத்தம் 987 வீடுகள் உள்ளன.

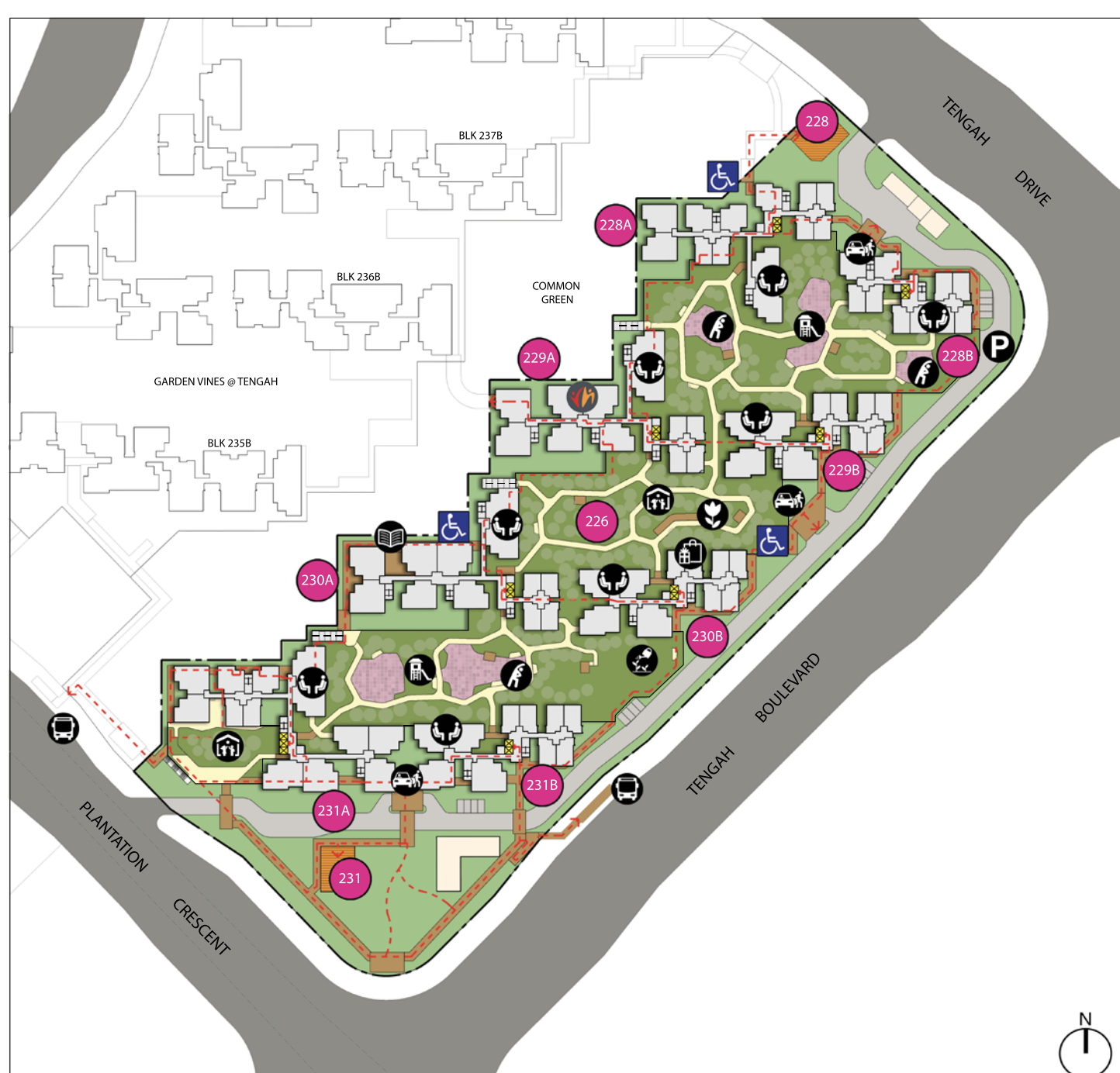
Garden Vale-இல் உள்ள வீடுகளைச் சுற்றித் தழைத்த பசுமையான புவெளியும், இயற்கை சூழலும் அமைந்துள்ளது. இங்குக் குடியிருப்பாளர்கள் தரமான வாழும் சூழலை அனுபவிப்பதோடு, பல வசதிகள் மற்றும் பசுமை வெளிகளில் சமூகத்துடன் இணையலாம்.

About Garden District

Garden District is framed by Tengah Pond and Central Park. This picturesque setting will be complemented by the garden-themed farmway, which encourages healthy and active living. Themed playgrounds inspired by nature or motifs such as flowers and garden creatures strengthen the visual identity of Garden District and encourage imaginative play. Green markers at key entry points along the Garden District, such as botanical arbours framed with flowering creepers, provide shade and visual respite from the urban landscape.

Explore the **Tengah Webpage** for the latest updates on Tengah town, including when the new amenities, facilities and developments are completing.

Site plan for Garden Vale @ Tengah



- LEGEND**
- Drop-off Porch
 - Adult Fitness Station / Elderly Fitness Station
 - Children Playground
 - Bus Stop
 - Residents' Network Centre
 - Education Center at 1st storey
 - Preschool at 1st storey
 - Rooftop Garden at E-Deck
 - E-Deck Car Park
 - Community Living Room
 - Space for Community Garden at E-Deck
 - Block
 - Lift
 - Staircase
 - Driveway
 - Covered linkway / Shelter / Trellis / Pergola
 - Precinct Pavilion
 - Accessibility Route (sheltered)
 - Barrier-free Access

Conveniences at your Doorstep



Garden Vale @ Tengah comes with a range of facilities such as a preschool and a Residents' Network Centre to meet the needs of the residents. You can also find outdoor recreational facilities and amenities including the landscape deck, adult and elderly fitness stations, as well as children's playgrounds located within the development.

Residents at Garden Vale @ Tengah can patronise the precinct shop cluster, consisting of an eating house, a supermarket and shops, located at neighbouring Garden Vines @ Tengah for their daily needs. With Plantation Plaza Neighbourhood Centre (NC) located nearby, residents from Garden Vale @ Tengah can access a wide range of shopping and dining options close to home, with a supermarket, food court, restaurants, F&B outlets, retail and services shops conveniently located within the NC.

Garden Vale @ Tengah is also conveniently located near the Jurong Region Line MRT stations. The precinct is served by bus services leading to the city and nearby towns. Residents can walk and cycle everywhere in Tengah, using the extensive network of walking and cycling paths when they are ready in future. These amenities add convenience while serving the transport needs of residents.

You can look forward to upcoming developments such as a suite of new amenities and facilities, and improved connectivity within your neighbourhood in the coming months.

Check out **Your Garden Vale Travel Guide** on the convenient modes of transport you can take within and around the town.

Garden Vale is in Hong Kah North Constituency. Keep up to date on community news and events via the **Tengah Community Hub Facebook!**

Find out more about your neighbourhood at HDB Map Services by exploring the interesting **Heartland Spots** within your Town!



Modern Homes

Garden Vale @ Tengah consists of 2-room Flexi, 3-room, 4-room and 5-room flats.

The 2-room Flexi flats come in 2 sizes: 40sqm and 47sqm, and are available either on a 99-year lease or short-lease. These flats are furnished with floor finishes in the living/ dining rooms, bedrooms, kitchen, household shelter and bathroom. Wall finishes are provided in the kitchen and bathroom, as well as sanitary fittings, i.e. wash basin with tap mixer, bath/ shower mixer with shower set and water closet suite. A sliding partition/ door for the bedroom and folding bathroom door are also provided.

The 2-room Flexi flats on short-leases, which are meant for the elderly, are fitted with grab bars.

The 3-room, 4-room and 5-room flats come with floor finishes in the living/ dining rooms, bedrooms, kitchen, service yard, household shelter and bathrooms. Wall finishes are provided in the kitchen and bathrooms, as well as sanitary fittings, i.e. wash basin with tap mixer, bath/ shower mixer with shower set and water closet suite.

Some 5-room flats in Garden Vale @ Tengah come with a balcony in the living room.



Eco-Friendly Living

Tengah is also the first HDB town planned with town-wide smart technologies from the outset. Garden Vale @ Tengah integrates smart technology in its design, so that residents can enjoy a quality living environment. The smart technology includes Smart-Enabled homes with provisions to support easy adoption of smart home solutions, Smart Lighting in common areas to reduce energy usage, and Smart Pneumatic Waste Conveyance System for cleaner and fuss-free waste disposal.

To encourage a green and sustainable lifestyle, Garden Vale @ Tengah is designed with several eco-friendly features. These include separate chutes for recyclable waste; regenerative lifts and smart lighting in common areas to reduce energy consumption; bicycle stands to encourage cycling as an environmentally friendly form of transport; parking spaces to facilitate future provision of EV charging; and Active, Beautiful, Clean (ABC) Waters design features to clean rainwater and beautify the landscapes.

Residents can subscribe to have air conditioning provided from a centralised cooling system which is the first of its kind for public housing in Singapore. The highly energy-efficient chillers will cool each household and do away with the need to install and maintain outdoor condensing units on the air-conditioner ledge, thereby, enjoying cost savings while contributing to a sustainable lifestyle in this eco-friendly district. Residents may find out more from SP Group at tengahcooling@spgroup.com.sg.



Separate chutes for recyclable waste



Bicycle stands to encourage cycling



ABC Waters design features

© 2024 Housing & Development Board.
All rights reserved.

