

An architectural rendering of a modern high-rise residential development. The scene features several tall, slender apartment buildings with a mix of grey, white, and orange-brown facade panels. The buildings are set against a bright blue sky with scattered white clouds and a few birds in flight. In the foreground, there is a paved road with a few cars, including a dark grey sedan in the immediate foreground and a white car further down the road. Lush green trees and manicured lawns are interspersed between the buildings and along the road. The overall atmosphere is clean, modern, and vibrant.

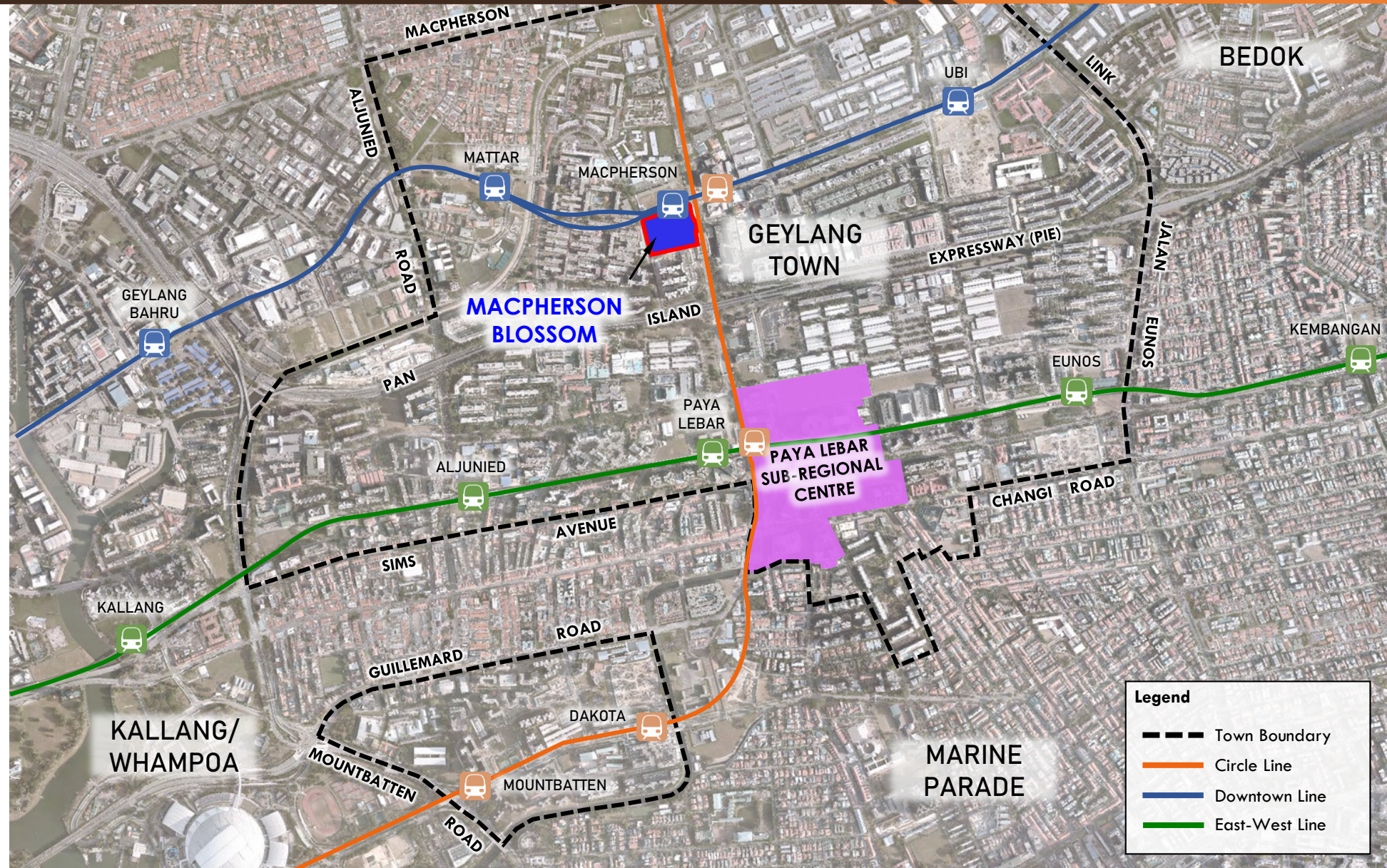
*Sharing on*

# MACPHERSON BLOSSOM



# Geylang Town | Overview

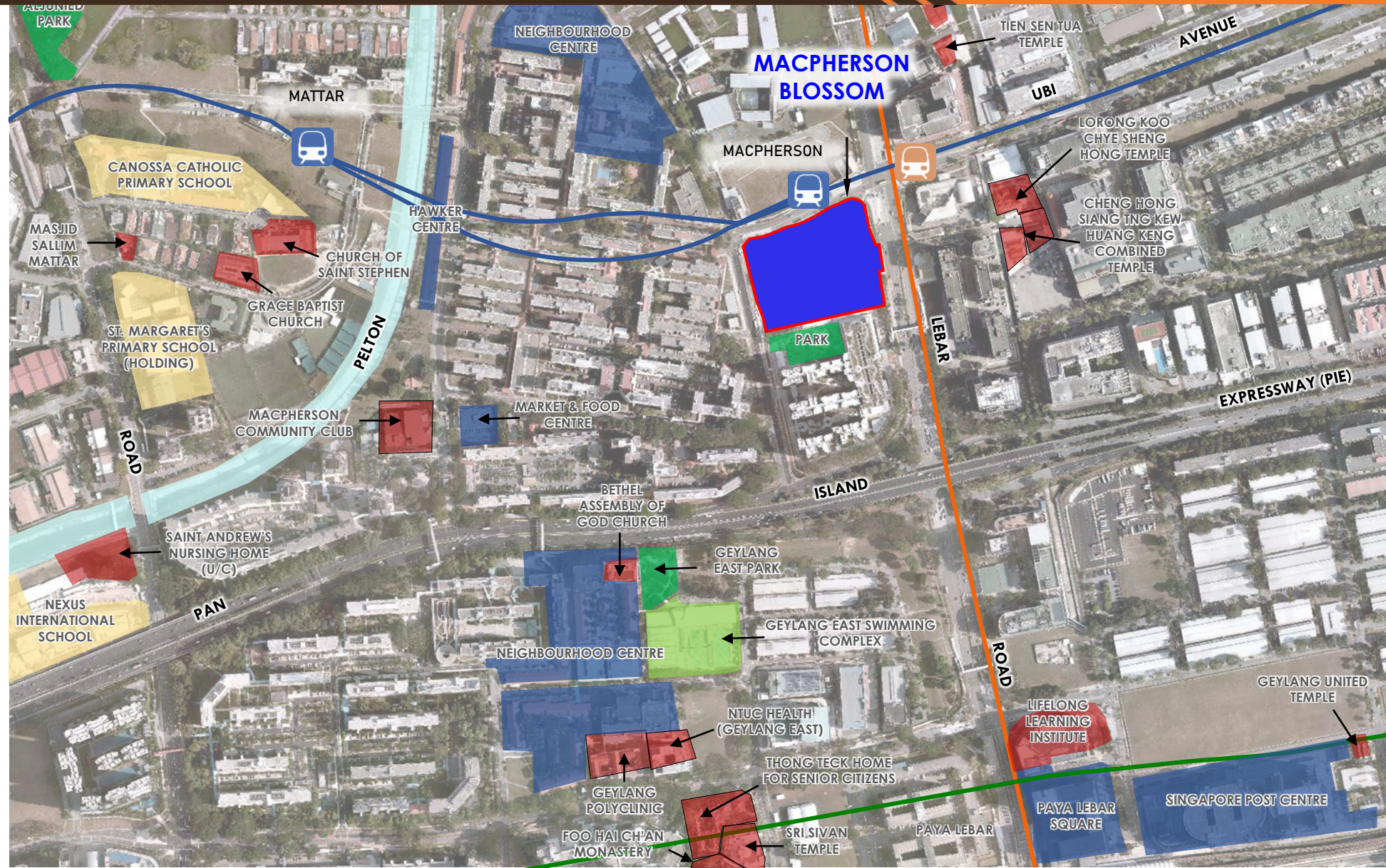
- Geylang is an iconic area in the central part of Singapore with a distinctive identity
- Geylang town has an eclectic mix of landuses - from the residential blocks of Macpherson and industrial lanes of Ubi to the famed Old Airport Road Food Centre and buzzing Paya Lebar.
- It hosts a variety of amenities, with spaces for culture, learning, commerce and play.





# Geylang Town | Overview

## Amenities around MacPherson Blossom





# MacPherson Blossom

MacPherson Blossom is located within Geylang District and is bounded by Circuit Road, Circuit Link and Paya Lebar Road.

## A Desired Destination



- The name “MacPherson Blossom” signifies the growth or blossoming of a new development
- Offers the perks of a modern home amid the charms of a mature estate





# MacPherson Blossom

## LEGEND

-  Precinct Green Spaces
-  Community Living Room

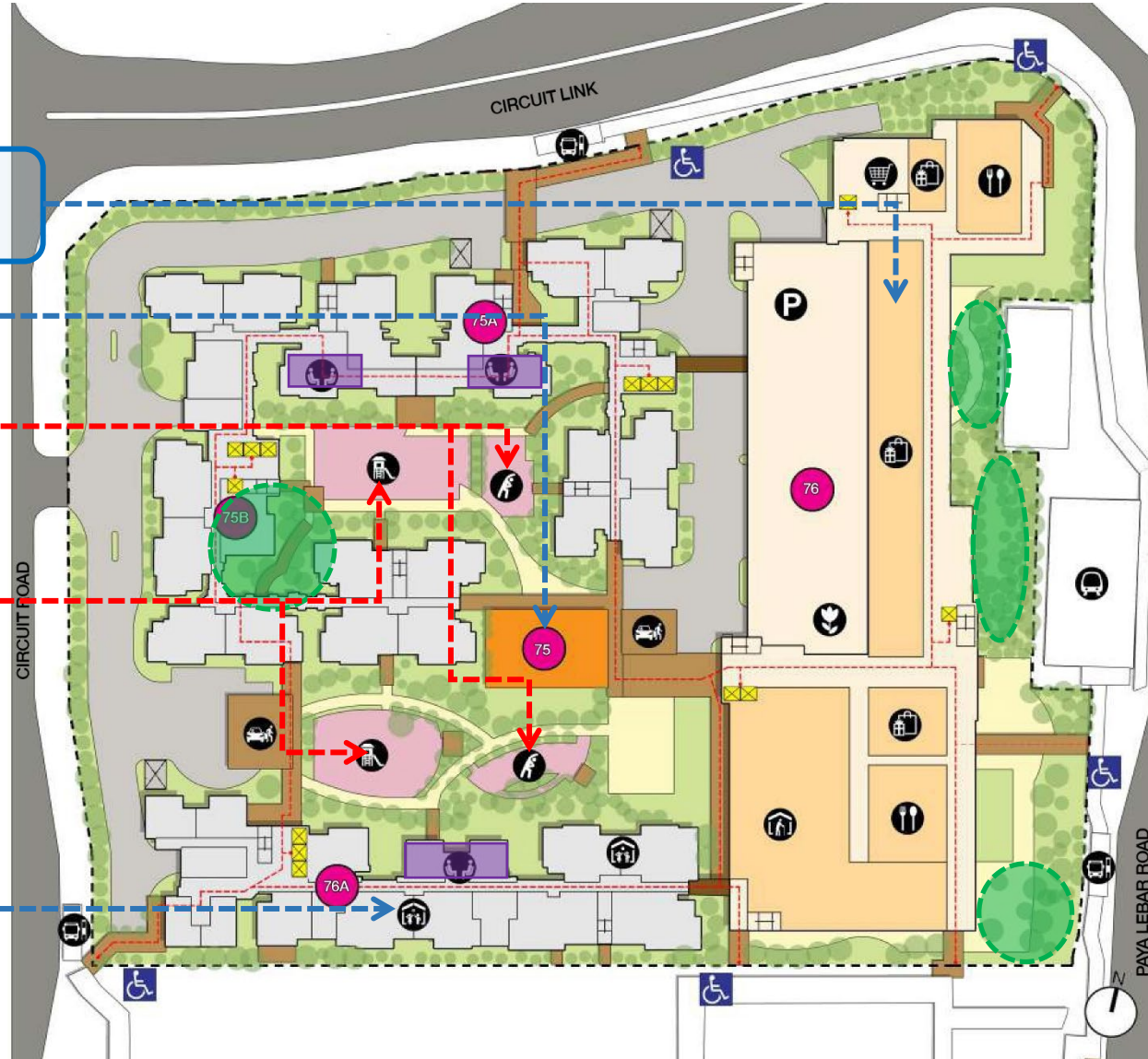
**EATING HOUSE, SHOPS  
AND MINI-MART**

**PRECINCT PAVILION**

**ADULT & ELDERLY  
FITNESS STATION**

**CHILDREN'S  
PLAYGROUND**

**PRESCHOOL**

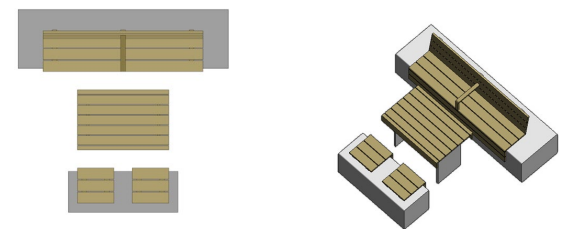


## Precinct Green Spaces

- Green Spaces located in the precinct provide areas for residents to connect with nature, exercise and socialize

## Community Living Rooms

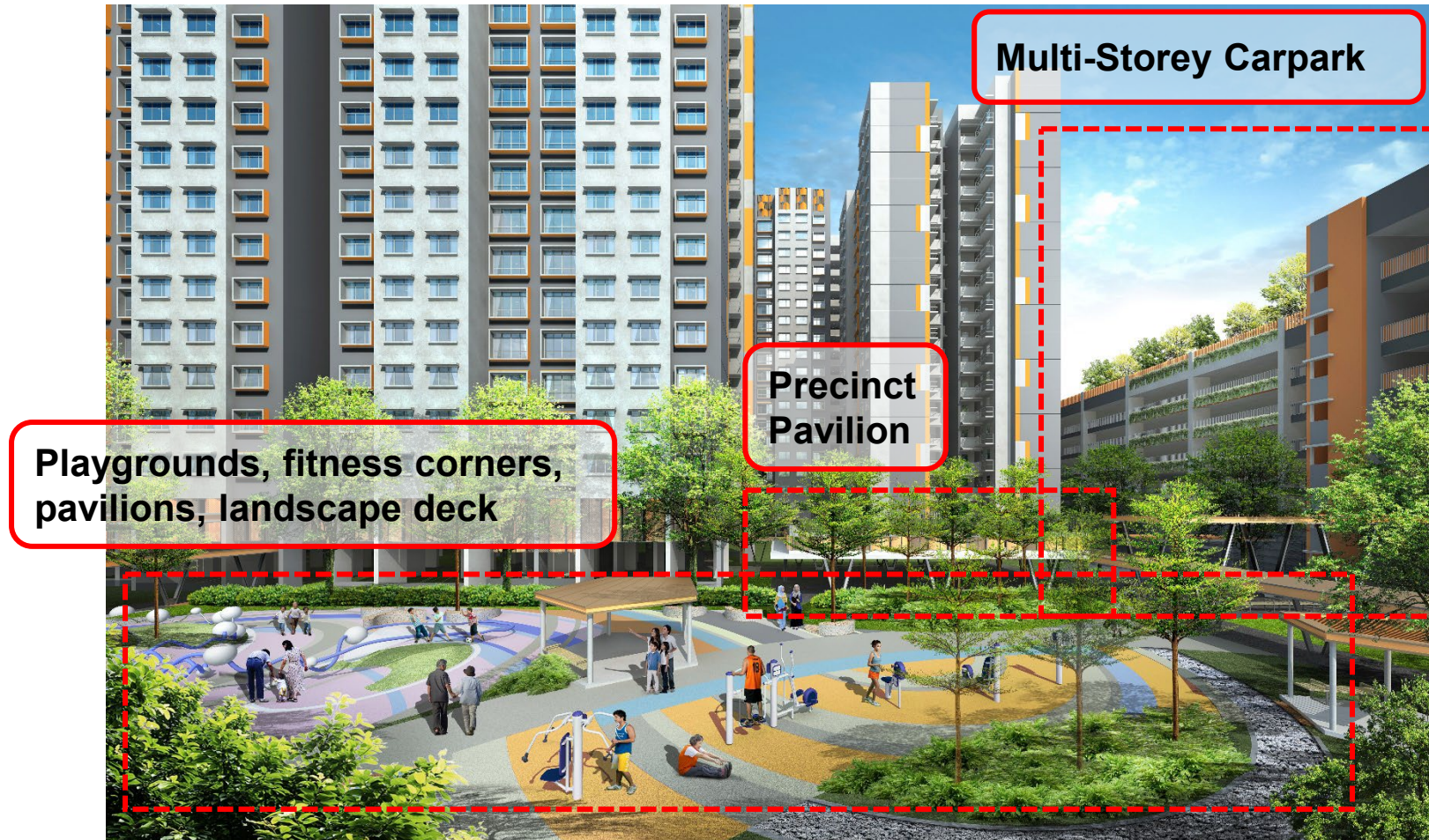
- Community Living Rooms (CLR) are designed with furniture, overlooking to the Green Spaces for residents to enjoy the nature and socialize.



**CLR  
Seats and Table for  
social gathering**



# MacPherson Blossom



With 2 eating houses, a supermarket, shops, a childcare centre, and elderly facilities within the development, you can be sure that your day-to-day needs will be well looked after. Recreational options at your doorstep include playground, fitness stations, and a roof garden above the multi-storey carpark. Facilities in this project will be accessible by the public.



*Welcome to your NEW HOME*

# MACPHERSON BLOSSOM

