

# KIM KEAT BEACON

## A Distinctive Development

Kim Keat Beacon is located in Toa Payoh, along Kim Keat Avenue. It comprises 3 residential blocks ranging from 25 to 30 storeys that offers 542 units of 3- and 4-room flats.

The development is named Kim Keat Beacon due to its prominent height and location.

Kim Keat Beacon位于大巴窑，沿着金吉道而建。该发展项目包括3座介于25层至30层高的组屋，共有542间三房式和四房式组屋单位。

发展项目的名称“Kim Keat Beacon”（意为“金吉灯塔”）源自其突出的高度和位置。

Kim Keat Beacon terletak di Kim Keat Avenue, Toa Payoh. Ia terdiri daripada 3 blok kediaman setinggi 25 hingga 30 tingkat yang menawarkan 542 unit flat 3 dan 4 bilik.

Pembangunan ini dinamakan Kim Keat Beacon kerana ketinggian dan lokasinya yang menonjol.

Kim Keat Beacon ஆனது கிம் கியாட் அவென்யூ நெடுகே தோ பாயோவில் அமைந்துள்ளது. இதில் 25 முதல் 30 மாடிகளைக் கொண்ட மூன்று குடியிருப்புப் புளோக்குகள் அடங்கியுள்ளன. அவற்றில் 3- மற்றும் 4-அறைகளைக் கொண்ட 542 வீடுகள் உள்ளன.

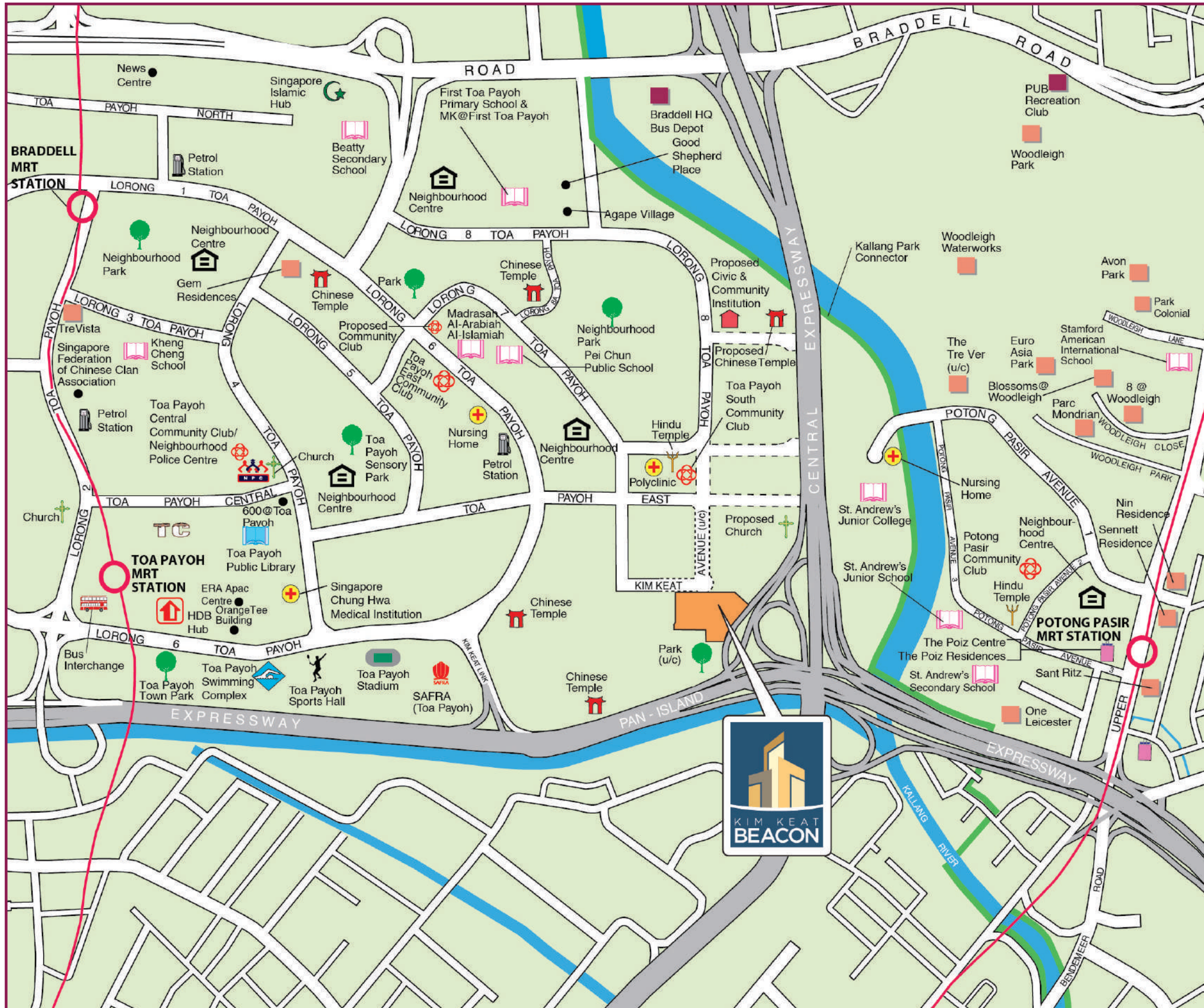
இந்த மேம்பாட்டின் வானளாவிய உயரம் மற்றும் அமைவிடம் காரணமாக இதற்கு Kim Keat Beacon என்று பெயரிடப்பட்டுள்ளது.

Site plan for Kim Keat Beacon





# Nearby Facilities



○ MRT Line & Station      ○ LRT Line & Station      === Under Construction / Future Road  
○ MRT Line & Station (u/c)      (u/c) Under Construction      MK MOE Kindergarten

Scale 0 200 400 Metres  
100 300 500

Residents of Kim Keat Beacon are served by bus services that would bring them to Toa Payoh bus interchange and MRT station, which connects residents to a wide range of transportation networks and facilities within and beyond Toa Payoh. Find out about the transport connections in your estate with **LTA's Travel Guide**.

Residents can visit the Toa Payoh Town Centre, HDB Neighbourhood Centres at Toa Payoh Lorong 1, 4, 7 and 8 for a variety of food options and a wide range of goods and services that serves their daily needs.

For leisure and recreation, residents can visit the nearby Toa Payoh Public Library, Toa Payoh Swimming Complex, Sports Hall, Stadium and Toa Payoh SAFRA. Residents can look forward to the new Toa Payoh Integrated Development (TPID) which comprises of a sport centre, polyclinic, library and Town Park. There are many neighbourhood parks around, and residents can also visit the future park located south of Kim Keat Beacon.

Residents in Kim Keat Beacon will be served by Toa Payoh South Community Club and Toa Payoh East Community Club. Check out the activities organised by them via **Toa Payoh South CC Facebook & Toa Payoh East CC Facebook!**

Find out more about your neighbourhood and explore the interesting **Heartland Spots** with your Town through the 360-degree virtual tours!



# Modern Homes

Within Kim Keat Beacon, there is a childcare centre to meet the needs of residents. Residents can enjoy a range of recreational facilities such as a children playground and fitness stations. There are also roof gardens within the development, serving as outdoor spaces for residents to enjoy, interact and relax in a greener setting.





# Eco-Friendly Living

To encourage a 'green' lifestyle, Kim Keat Beacon is designed with several eco-friendly features:

- Separate chutes for recyclable waste to facilitate recycling;
- Motion sensor-controlled energy efficient lighting at staircases to reduce energy consumption;
- Regenerative lifts that reduce energy consumption;
- Eco-pedestals in bathrooms to encourage water conservation;
- Bicycle stands to encourage cycling as an environmentally friendly form of transport;
- Parking spaces to facilitate future provision of EV charging



Separate chutes for recyclable waste



Eco-pedestals



Bicycle stands

© 2023 Housing & Development Board.  
All rights reserved.

