



Sharing on

TOWNER CREST

Kallang/ Whampoa

Overview

- Kallang/ Whampoa is located right at the city fringe, with an eclectic mix of landuses - from the residential blocks of Bendemeer and Boon Keng, and industrial areas of Geylang Bahru. It is also in proximity to the waterfront with Kallang River flowing through the town.
- It hosts a variety of amenities, with spaces for culture, learning, commerce and play and continues to be an attractive and diverse urban living environment for all ages.



Legend

- Town Boundary
- Circle Line
- Downtown Line
- East-West Line
- North-South Line
- North-East Line
- - - Thomson-East Coast Line (U/C)

Kallang/ Whampoa

Amenities around Towner Crest



Towner Crest

Towner Crest is bounded by Serangoon Road and Towner Road.



Urban Vitality

- The name “Towner Crest” describes its tall residential blocks that range 35 to 39 storeys high



Towner Crest

LEGEND

-  Precinct Green Spaces
-  Community Living Room

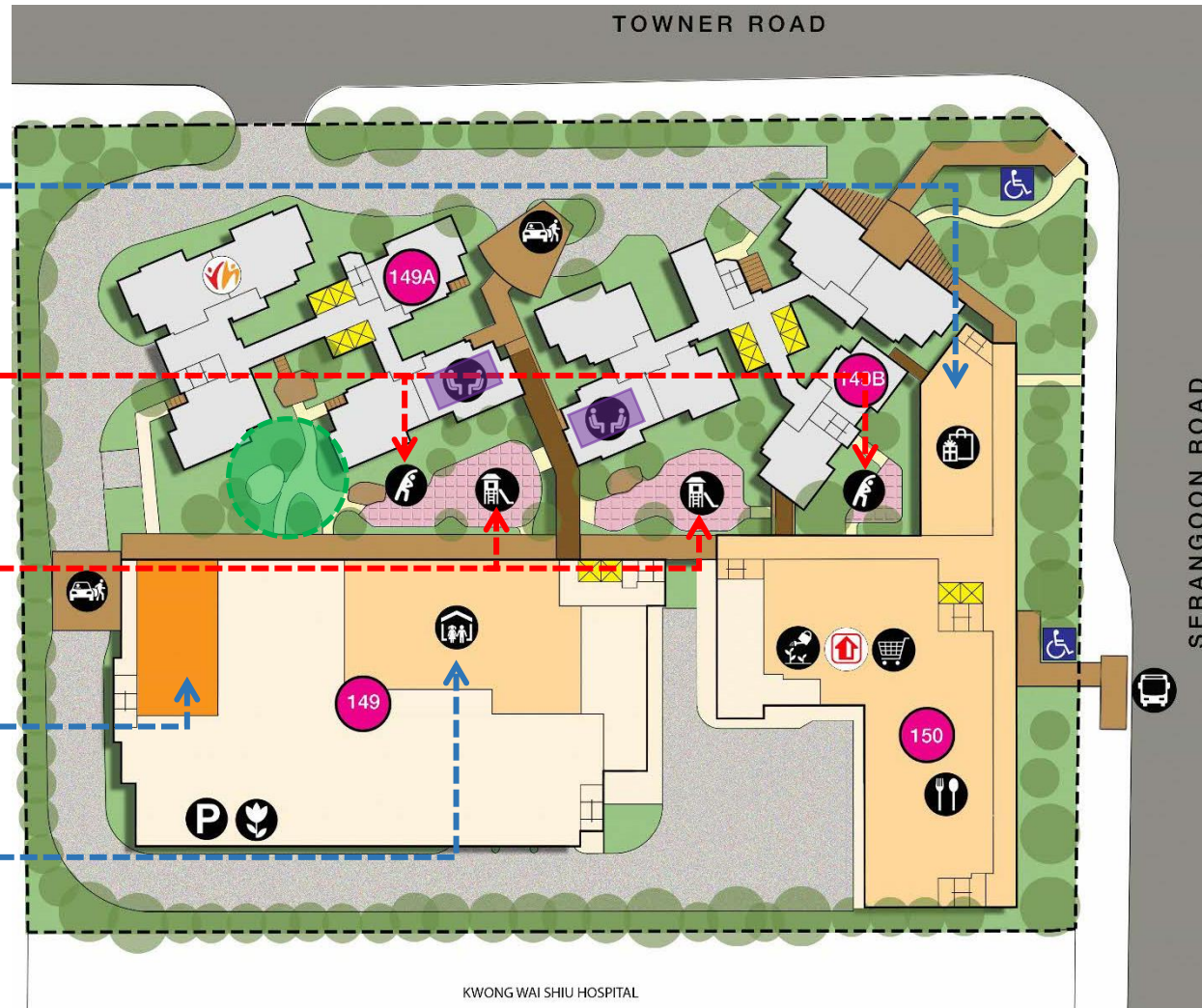
**EATING HOUSE,
SUPERMARKET, HDB
ELOBBY AND SHOPS**

**ADULT & ELDERLY
FITNESS STATION**

**CHILDREN'S
PLAYGROUND**

PRECINCT PAVILION

PRESCHOOL

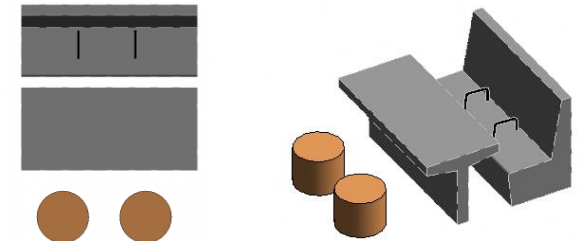


Precinct Green Spaces


- Green Spaces located in the precinct provide areas for residents to connect with nature, exercise and socialize

Community Living Rooms

- Community Living Rooms (CLR) are designed with furniture, overlooking to the Green Spaces for residents to enjoy the nature and socialize.



**CLR
Seats and Table for
social gathering**



Multi-Storey Carpark

Precinct Pavilion

**Playgrounds, fitness corners,
pavilions, landscape deck**

With an eating houses, a supermarket, HDB e-Lobby, shops, a childcare centre, and elderly facilities within the development, you can be sure that your day-to-day needs will be well looked after. Recreational options at your doorstep include playground, fitness stations, and roof gardens above the multi-storey carpark and commercial block. Facilities in this project will be accessible by the public.

Welcome to your NEW HOME

TOWNER CREST

