

# NORTHSHORE COVE

## Waterfront Living

Northshore Cove is located within the Northshore district of Punggol Eco-Town, and along Northshore Drive. It comprises 4 residential blocks, with heights ranging from 18 to 26 storeys with a total of 801 units of 2-room Flexi, 3-, 4-, and 5-room flats.

Northshore Cove is designed to maximise residents' view of the sea and the development's name is inspired by its waterfront location. The development's landscape features mangrove clusters and an elevated boardwalk.

Northshore Cove位于榜鹅生态市镇的北岸和北岸通道。该发展项目包括4座介于18层至26层高的组屋，共有801间二房式灵活单位、三房式、四房式和五房式组屋单位。

Northshore Cove的设计理念是让住户有更多机会看到大海，而这个发展项目的名称“Northshore Cove”（意为北岸湾）灵感就来自其濒海的位置。该发展项目的特色包括多个小红树林集群和一个高架木板步道。

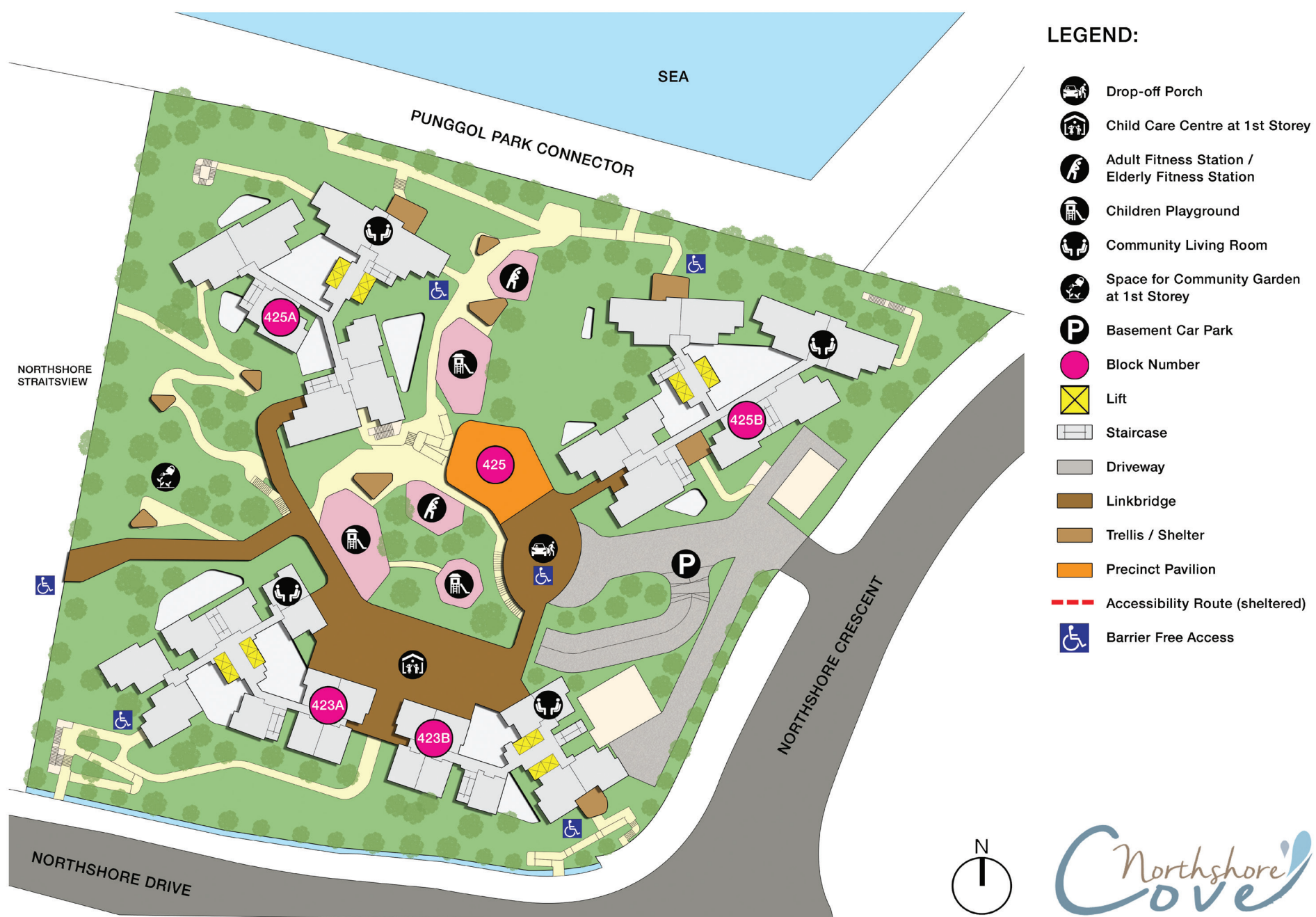
Northshore Cove terletak di Northshore Drive dan dalam kawasan Bandar Eko Punggol Northshore. Ia terdiri daripada 4 blok kediaman, setinggi 18 hingga 26 tingkat dengan 801 unit flat Fleksi 2 bilik, 3, 4 dan 5 bilik.

Northshore Cove direka untuk memberikan penduduk pemandangan laut yang indah dan nama pembangunan ini diilhamkan oleh lokasinya di pesisiran laut. Landskap pembangunan ini menampilkan kelompok-kelompok bakau dan laluan tepi pantai yang ditinggikan.

Northshore Cove சுற்றுச்சூழலைக் காக்கின்ற பொங்கோல் நகரத்தின் நார்த்ஷோர் வட்டாரத்திற்குள், நார்த்ஷோர் ட்ரைவ் நெடுக அமைந்துள்ளது. இதில் 18 முதல் 26 மாடிகள் வரையிலான உயரம் கொண்ட 4 குடியிருப்புப் புளோக்குகள் உள்ளடங்கியுள்ளன. இவற்றில் 2-அறை ஃப்ளெக்ஸி, 3-, 4- மற்றும் 5-அறை வீடுகள் என மொத்தம் 801 வீடுகள் உள்ளன.

Northshore Cove குடியிருப்பாளர்கள் கடலை அதிகளவு காணும் வகையில் வடிவமைக்கப்பட்டுள்ளது, மேலும் இந்த மேம்பாடு இதன் நீர்முகப்பு அமைவிடத்தின் காரணமாக இப்பெயரைப் பெற்றுள்ளது. இந்த மேம்பாட்டின் நிலவடிவமைப்பானது அடர்த்தியான சதுப்புநிலத் தாவரங்களையும் உயரமான மரப்பால நடைபாதையையும் கொண்டுள்ளது.

### Site plan for Northshore Cove





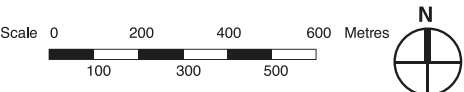
# Conveniences at your Doorstep



## LEGEND:

- MRT Line & Station
- MRT Line & Station (u/c)
- LRT Line & Station
- (u/c) Under Construction
- Under Construction / Future Road
- MK MOE Kindergarten

2-rm Flexi flats in Punggol Ripples, Punggol Emerald and Waterway Brooks come with elderly fixtures and fittings. They will be sold on a short lease between 15 - 45 years.



Northshore Cove is located near Punggol Point LRT station, which connects residents to Punggol MRT/LRT Stations.

Residents can look forward to the convenience of having a Child Care Centre located within the development. There are also playgrounds, adult and elderly fitness station, precinct pavilion rest shelters for residents’ enjoyment.

Residents can also enjoy the convenience of amenities such as a minimart, an eating house, shops and childcare centre in the nearby neighbourhood, Northshore StraitsView.

Travelling to and from Northshore Cove is quick, convenient, and easy. Please refer to the Land Transport Authority’s **Your Northshore Cove Travel Guide** for the transport connections in your development.

Northshore Cove will be served by Punggol Vista Community Centre. Follow them via Facebook (**Punggol Vista CC**) to find out more on the activities available!

Find out more about your neighbourhood at **HDB Map Services**. Explore the interesting Heartland Spots within your Town through the 360-degree virtual tours!



# A Home to Love and Cherish

Northshore Cove comprises 801 units of 2-room Flexi, 3-, 4-, and 5-room flats.

The 2 room Flexi flats comes in two sizes, 36 sqm and 45 sqm with options of a 99-year lease or short-lease. Floor finishes and wall tiles will be provided for the kitchen and bathroom. Floor finishes will also be provided for the household shelter.

The 2-room Flexi flats on short-leases, which are meant for the elderly, are fitted with grab bars.

The 3-, 4-, and 5-room flats come with floor finishes in the kitchen, household shelter, service yard, and bathrooms. Wall tiles are also provided in the kitchen and bathrooms. Some 4- and 5-room flats come with a balcony at the living room.

All new HDB flats have Universal Design features such as wider internal corridors, and ramps at the main entrance and bathrooms.





# Smart and Eco-Friendly Living

To encourage an eco-friendly lifestyle, Northshore Cove is designed with several eco-friendly features such as separate chutes for recyclable wastes to facilitate recycling; regenerative lifts and motion sensor-controlled energy efficient lighting at staircases to reduce energy consumption; eco-pedestals in bathrooms to conserve usage of water; and bicycle stands to encourage cycling as an environmentally friendly form of transport.

Northshore Cove features Smart technologies for a more liveable, efficient, sustainable, and safe living environment. For instance, the Smart-Enabled Homes supports the easy installation of the smart systems such as the Elderly Monitoring System and Utilities Monitoring System. The Smart Lighting provides an on-demand lighting to meet the needs of residents while reducing energy consumption along the common corridors. The Smart Pneumatic Waste Conveyance System optimizes the deployment of resources for cleaner and fuss free waste disposal.



Separate chutes for recyclable waste



Bicycle Stands



ABC Waters design features

© 2022 Housing & Development Board.  
All rights reserved.

