

# TAMPINES GREENDEW

## Contemporary Lifestyle

Comprising four (4) 15-storey residential blocks offering 726 units of 3-, 4- and 5-room flats, Tampines Greendew is located in Tampines North, bounded by Tampines North Drive 2 and Tampines Street 62.

The name 'Tampines GreenDew' draws inspiration from the leaf concept of Tampines Town and the location of the development in Tampines North, the leaf tip.

Tampines Greendew 包括4座15层高的住宅大楼，共有726个三房式、四房式和五房式组屋单位。该住宅项目位于淡滨尼北，四周环绕着淡滨尼北2通道和淡滨尼62街。

该住宅项目的名称“Tampines GreenDew”，灵感来自于淡滨尼市镇的绿叶概念，以及该住宅项目所处的位置——淡滨尼北，正好是绿叶的尖端。

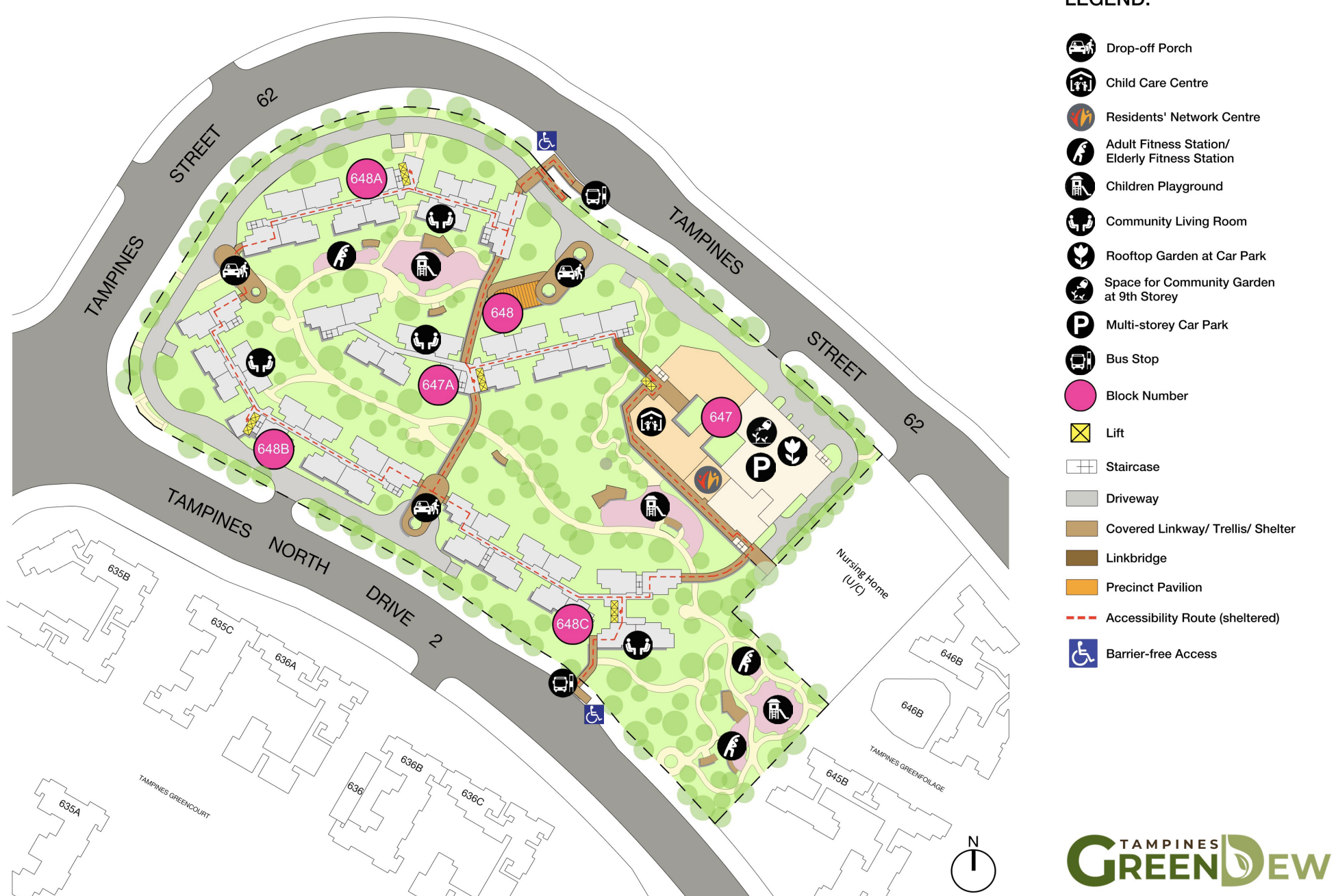
Terdiri daripada empat (4) buah blok kediaman 15 tingkat yang menawarkan 726 unit flat 3, 4 dan 5 bilik, Tampines Greendew terletak di Tampines North, disempadani oleh Tampines North Drive 2 dan Tampines Street 62.

Nama 'Tampines GreenDew' meraih inspirasi daripada konsep daun Bandar Tampines dan lokasi pembangunan di Tampines North, iaitu bahagian hujung daun.

Tampines Greendew, 15 அடுக்கு மாடிகளுடன் நான்கு (4) குடியிருப்பு புளோக்குகளைக் கொண்டுள்ளது. இதில் 3-அறைகள், 4-அறைகள் மற்றும் 5-அறைகள் கொண்ட வீடுகள் என மொத்தம் 726 வீடுகள் உள்ளன. Tampines Greendew, தெம்பனிஸ் வடக்குப் பகுதியில் தெம்பனிஸ் வடக்கு டிரைவ் 2 மற்றும் தெம்பனிஸ் ஸ்ட்ரீட் 62 ஆகியவை சூழ அமைந்துள்ளது.

தெம்பனிஸ் நகரத்தின் இலை கருத்தாக்கம் மற்றும் “இலையின்” நுனியாகத் திகழும் தெம்பனிஸ் வடக்குப் பகுதியில் இந்த மேம்பாடு அமைந்திருப்பது போன்ற விஷயங்களால் கவரப்பட்டு, இதற்கு 'Tampines GreenDew' என்ற பெயர் சூட்டப்பட்டுள்ளது.

### Site plan for Tampines Greendew





# Conveniences at Your Doorstep



**LEGEND:**

MRT Line & Station	Under Construction / Future Road	2-rm Flexi flats in Golden Carnation, Golden Pines, Tampines Alcoves, Tampines GreenWeave, and Tampines GreenWood come with elderly fixtures and fittings. They will be sold on a short lease between 15 - 45 years.
Future MRT Line & Station (working names only)	(u/c) Under Construction	
MK MOE Kindergarten		

Scale 0 100 200 300 400 500 Metres

N

With a park and upcoming interim bus interchange around the development, residents will find daily conveniences within easy reach.

Within the development, there are a Child Care Centre and a Residents' Network Centre to serve the needs of the residents.

Travelling to and from Tampines GreenDew is quick, convenient and easy. Please refer to the Land Transport Authority's **Your Tampines GreenDew Travel Guide** for the transport connections in your development.

Tampines GreenDew will be served by Tampines North Community Club. Check out the activities organised by them via **Facebook**.

Find out more about your neighbourhood at <http://www.hdb.gov.sg/map>. Explore the interesting Heartland Spots within your Town through the 360-degree virtual tours



# Delightful Homes

Tampines GreenDew offers 3-, 4-, and 5-room flats. These flats will come with:

- Floor finishes in the kitchen, household shelter, service yard, and bathrooms
- Wall tiles in the kitchen and bathrooms

All new HDB flats have Universal Design features such as wider internal corridors, and ramps at the main entrance and bathrooms.





# Eco-Friendly Living

To encourage an eco-friendly lifestyle, the development is designed with several eco-friendly features such as separate chutes that are provided for recyclable wastes, eco-pedestals in bathrooms and bicycle stands.



Separate chutes for recyclable waste



Eco-pedestals



Bicycle stands

© 2022 Housing & Development Board.  
All rights reserved.

